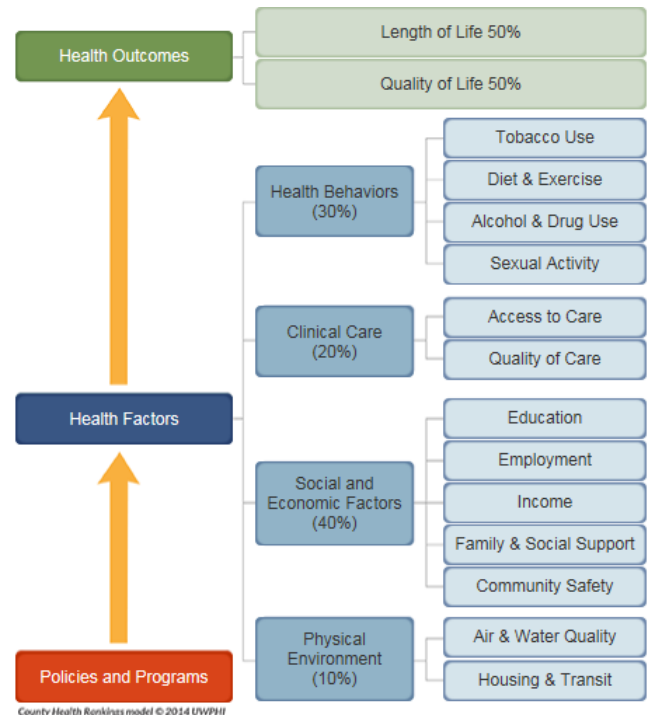


## About the County Health Rankings & Roadmaps

### About the County Health Rankings & Roadmaps

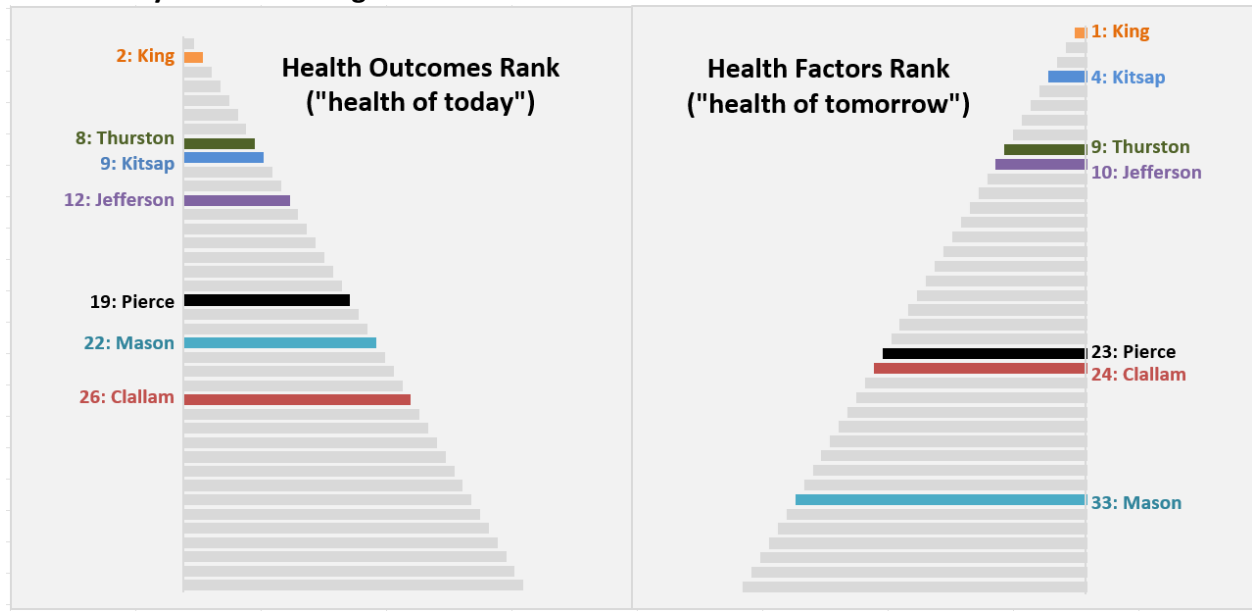
- <http://www.countyhealthrankings.org/>
- Developed by the Robert Wood Johnson Foundation and the University of Wisconsin Population Health Institute
- First released in 2010 for all U.S. counties, updates released annually but not comparable over time due to changes in definitions and sources
- Counties ranked within each state by indicators and section to allow comparison
- Data sources are national and must have data for *almost all* counties across the U.S.
- **Rankings & Roadmaps Contents:**
  - 35 indicators in 2 sections and 6 sub-sections:
    - Health Outcomes
      - Length of life and Quality of life
    - Health Factors
      - Health Behaviors, Clinical Care, Social and Economic Factors, Physical Environment
- **County Health Rankings are:**
  - Generated from national-level data sources
  - Ranks based on comparison to other counties in the state; statistical trend over time for some measures; comparison to WA State and top 10% of U.S. counties



### County Health Rankings and Kitsap Public Health Indicators both:

- Raise awareness of community health
- Present a call to action
- Identify areas for more in-depth analysis

## 2022 County Health Rankings:



## Comparison to 2021 Rankings:

- Kitsap County's health outcomes ranking increased from 13<sup>th</sup> (2021) to 9<sup>th</sup> (2022) in Washington state.
- Kitsap County's health factors ranking stayed the same from 4<sup>th</sup> (2021) to 4<sup>th</sup> (2022) in Washington state.

## 2022 County Health Rankings Summary for Kitsap County

### HEALTH OUTCOMES – KITSAP RANKS 9<sup>TH</sup>

	RANK	AREAS OF STRENGTH	IMPROVING TRENDS	AREAS TO EXPLORE	WORSENING TRENDS
<b>Length of Life</b>	13 <sup>th</sup>		<ul style="list-style-type: none"> <li>Decrease in years of potential life lost.</li> </ul>		
<b>Quality of Life</b>	5 <sup>th</sup>				

### HEALTH FACTORS – KITSAP RANKS 4<sup>TH</sup>

	RANK	AREAS OF STRENGTH	IMPROVING TRENDS	AREAS TO EXPLORE	WORSENING TRENDS
<b>Health Behaviors</b>	7 <sup>th</sup>	<ul style="list-style-type: none"> <li>Low rate of physical inactivity</li> </ul>	<ul style="list-style-type: none"> <li>Decrease in alcohol-impaired driving deaths</li> </ul>	<ul style="list-style-type: none"> <li>Adult smoking</li> <li>Adult obesity</li> </ul>	<ul style="list-style-type: none"> <li>Increase in number of sexually transmitted infections (chlamydia)</li> </ul>
<b>Clinical Care</b>	6 <sup>th</sup>	<ul style="list-style-type: none"> <li>Low rate of uninsured</li> <li>Access to primary care physicians</li> <li>Access to mental health providers</li> <li>Low rate of preventable hospital stays</li> </ul>	<ul style="list-style-type: none"> <li>Decrease in percent uninsured</li> <li>Decrease in ratio of population to dentists</li> <li>Decrease in rate of preventable hospital stays</li> <li>Increase in flu vaccinations</li> </ul>		<ul style="list-style-type: none"> <li>Increase in ratio of population to primary care physicians</li> <li>Decrease in percent of eligible population receiving their annual mammography screening</li> </ul>
<b>Social and Economic Factors</b>	7 <sup>th</sup>	<ul style="list-style-type: none"> <li>High percentage of adults completing high school and with some college</li> <li>Low income inequality</li> </ul>	<ul style="list-style-type: none"> <li>Decrease in number of violent crimes</li> </ul>		<ul style="list-style-type: none"> <li>Increase in number of injury deaths</li> </ul>
<b>Physical Environment</b>	7 <sup>th</sup>	<ul style="list-style-type: none"> <li>Low average daily density of fine particulate matter</li> <li>Low percentage of workforce that drives alone to work</li> </ul>	<ul style="list-style-type: none"> <li>Decrease in air pollution (PM2.5)</li> </ul>		

County Health Rankings website: <http://www.countyhealthrankings.org/>