

Kitsap Public Health Board Health Officer Update

Gib Morrow, MD, MPH
Health Officer
November 7, 2023



KITSAP PUBLIC HEALTH DISTRICT

Agenda – Brief Update

- Respiratory Illness
- Housing and Homelessness
- Substance Use Prevention and Response (SUPR)
- Healthcare Assessment Update
- Policy Introduction



Respiratory Illness

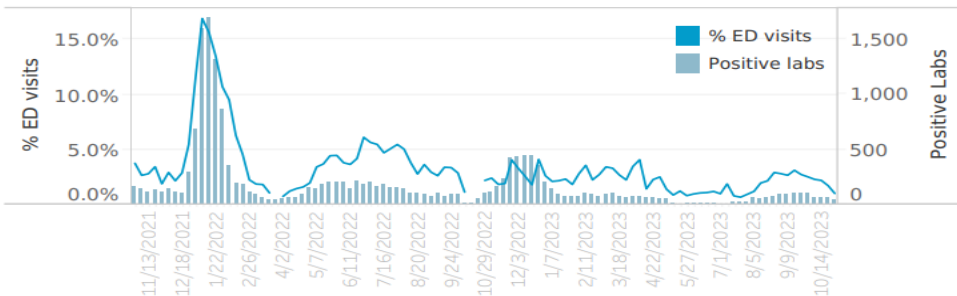
WEEKLY RESPIRATORY SURVEILLANCE REPORT

2023, Week 43 | Week ending 10/28/2023



1 | COVID-19

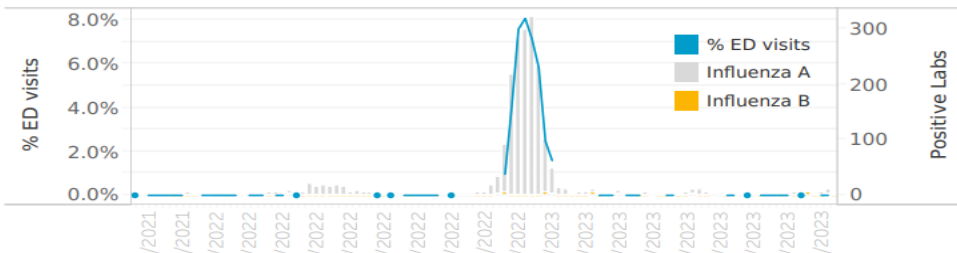
Data are shown for past 24 months.



Labs	30 of 379 (7.9%) specimens positive in past reporting week
ED Visits	14 of 1367 (1.0%) visits attributable to COVID-19 in past reporting week
Outbreaks in LTCFs	4 COVID-19 outbreaks reported in past 28 days

2 | INFLUENZA

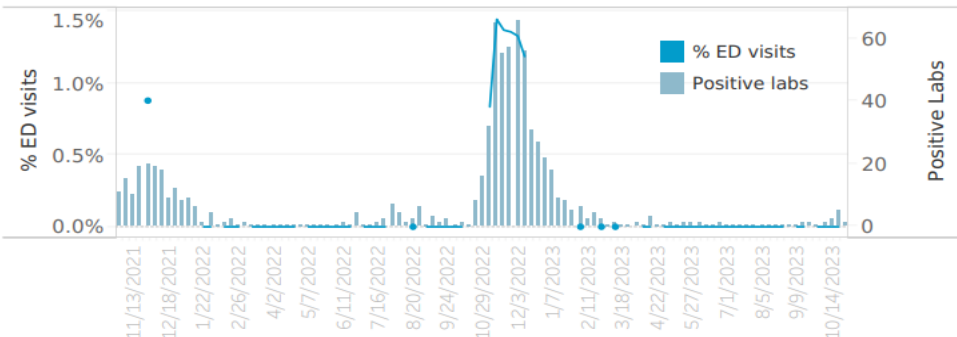
Data are shown for past 24 months.



Labs	3 of 222 (1.4%) specimens positive in past reporting week
ED Visits	<10 of 1367 (<0.7%) visits attributable to Influenza in past reporting week
Outbreaks in LTCFs	0 Influenza outbreaks reported in past 28 days
Deaths	0 Influenza deaths in past 28

3 | RESPIRATORY SYNCYTIAL VIRUS (RSV)

Data are shown for past 24 months.



Labs	1 of 30 (3.3%) specimens positive in past reporting week
ED Visits	<10 of 1367 (<0.7%) visits attributable to RSV in past rep..

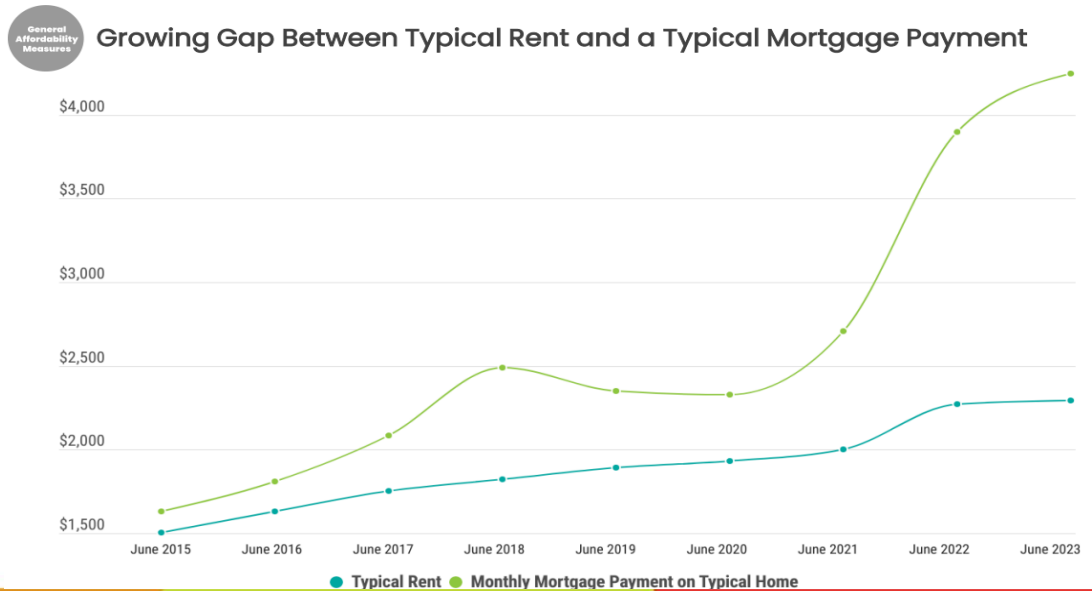
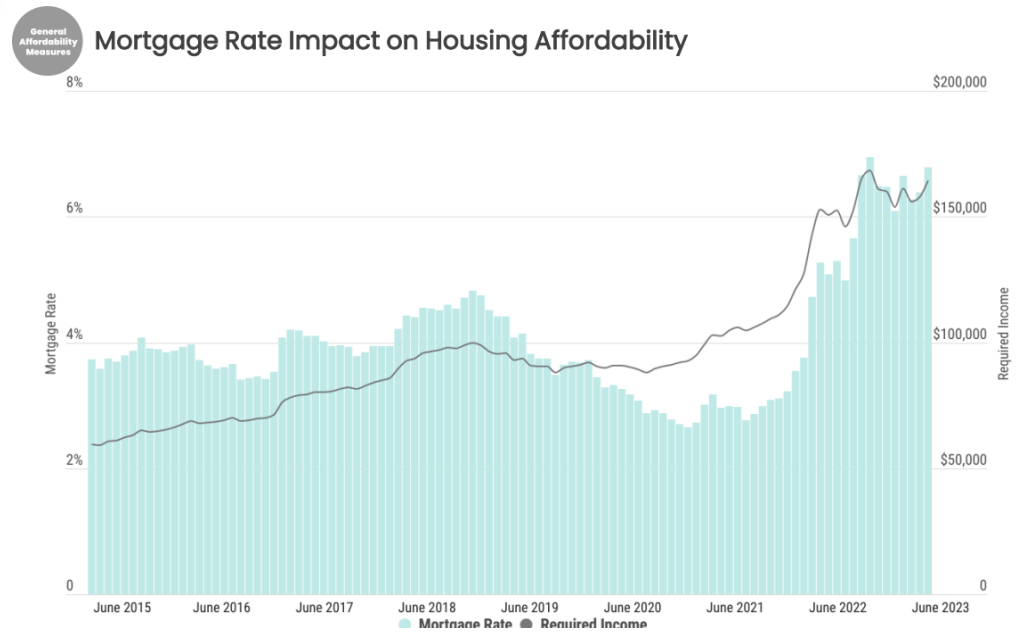
TAKEAWAYS:

- COVID present but low
- Starting to see Flu A
- Minimal RSV
- Flu & RSV tend to rise rapidly
- Good time for vaccinations
- Pharmacies best place for immunizations



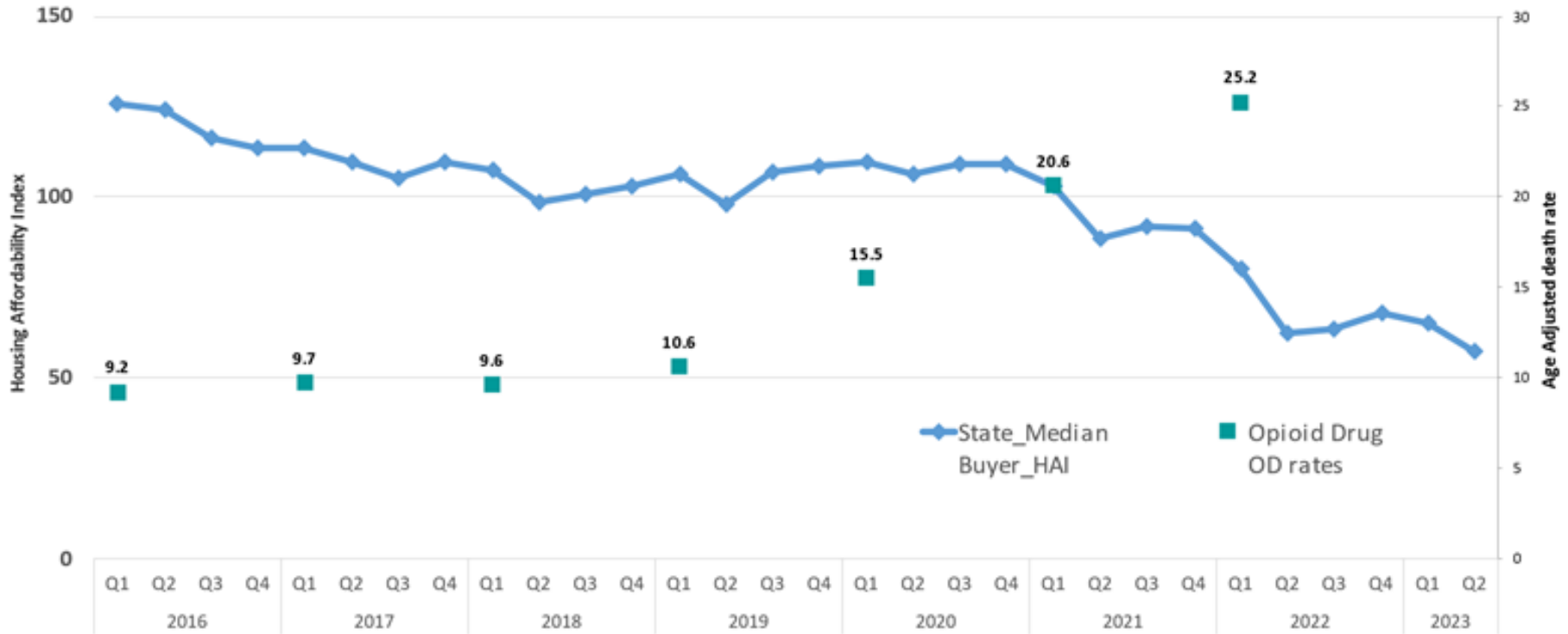
Housing and Homelessness

- Biggest driver of homelessness is cost of housing
- Unaffordability of housing didn't just happen -- It's a result of policy choices
- Role that housing codes, regulations have driven costs up relative to the value they bring



Opioids, Housing, and Public Health

Housing Affordability Index (HAI) and Opioid -involved Drug Overdose Death Rates
 HAI: 2016 Q1-2023 Q2 & OD rates: 2016-2022



HAI Data Source: Washington Center for Real Estate Research (WCRER) at University of Washington

Washington State Department of Health | 8

Fatal OD Data Source: Washington State Department of Health, Center for Health Statistics, Death Certificate Data.

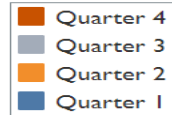


Kitsap County Emergency Medical Services (EMS) Opioid Overdose Quarterly Surveillance Report

Source: Washington State Department of Health, Washington Emergency Medical Services Information System (WEMSIS) (7 of 7 EMS reported for Kitsap County), County Emergency Medical Services (EMS) Opioid Monthly Surveillance Report, 2020 – 2023.

Notes

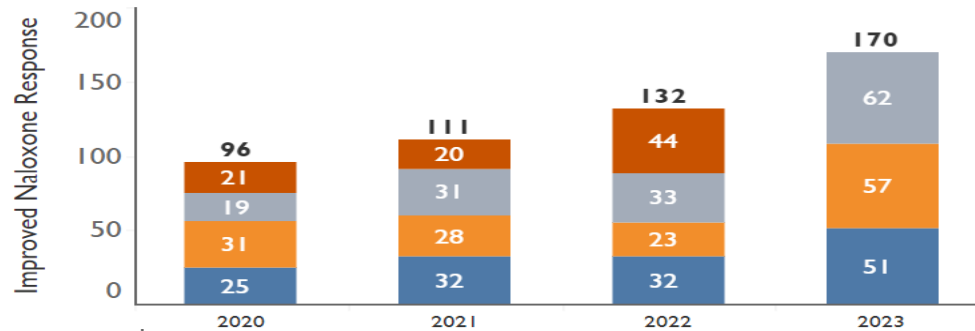
"Improved Naloxone Response" and "Opioid Impression" contain common responses and should not be added together to obtain a total count. "Suspected Overdose" includes the unduplicated combination of these fields, in addition to "Possible Opioid Related Incident".



Improved Naloxone Response:

Naloxone administered to patient and resulted in an improved patient response.

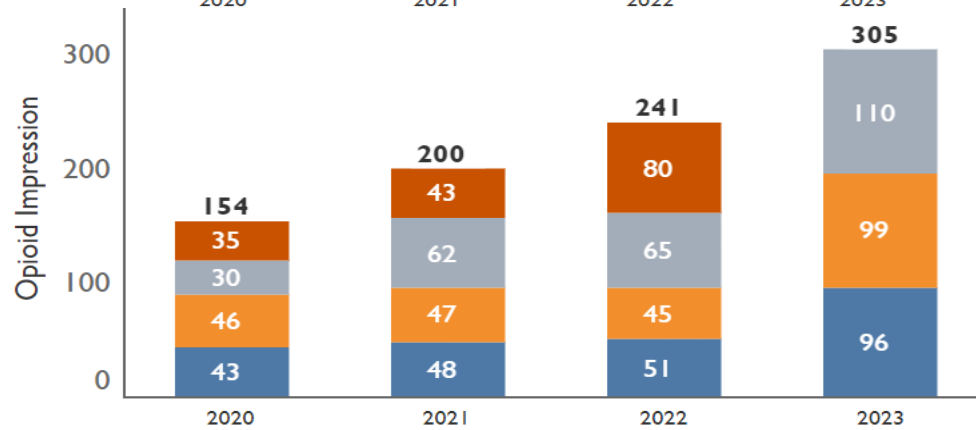
Data indicate the number of improved naloxone responses is **1.87 times** (87% increase) more in Q3 2023 when comparing to Q3 2022.



Opioid Impression:

Opioid was indicated by the EMS provider using any of the following ICD10 codes for the primary impression, secondary impression, or cause of injury: F11, T40.0-T40.4 & T40.6.

Data indicate the number of opioid impressions is **1.69** (69% increase) more in Q3 2023 when comparing to Q3 2022.



New Work at the Health District

Date	What
July 2023	FPHS funding for all LHJs for Opioid Response work
July 2023	DOH OD2A funding (past 5 years of funding) expired. This funding provided \$ for Naloxone training, education, and collaboration.
July/August 2023	Developed a new KPHD program called Substance Use and Prevention (SUPR) Program
September 2023	Hired new coordinator for the program
September 2023	Consultation with Opioid Response Network (ORN) to develop strategies for Kitsap County (consultation continues)
October 2023	With guidance from ORN, began Needs Assessment around Opioid Misuse in Kitsap County
October 2023	With guidance from ORN, finalized questions for community partners and people who use drugs to include qualitative data in Needs Assessment
October 2023	Met with SBHO leadership in how to partner with Opioid Abatement Collaboration on strategies based on finding from the Needs Assessment.
November 2023	Start interviews with community organizations and people who use drugs
December 2023	Finalized Needs Assessment with quantitative data and qualitative data. Development of strategies based on findings. ELT final review.
January/February 2024	Share findings and strategies with community.
February 2024	Develop workplans based on strategies

Additionally, supported and partnered with City of Poulsbo to receive funding for and open the North Kitsap Recovery Resource Center, October, '23



References

- [SEASONAL RESPIRATORY ILLNESSES: RESOURCES FOR COLD & FLU SEASON](#)
- [Regional Housing Strategy: 2023 Monitoring Report](#)
- [Department of Health Opioid Information](#)
- [Opioid and Drug Overdose Data](#)
- [EMS Opioid Quarterly Surveillance Report, Kitsap County, Washington](#)
- [OUR VISION, MISSION, AND GUIDING PRINCIPLES](#)



Draft 2024 Local Policy Map and Legislative Priorities Preview

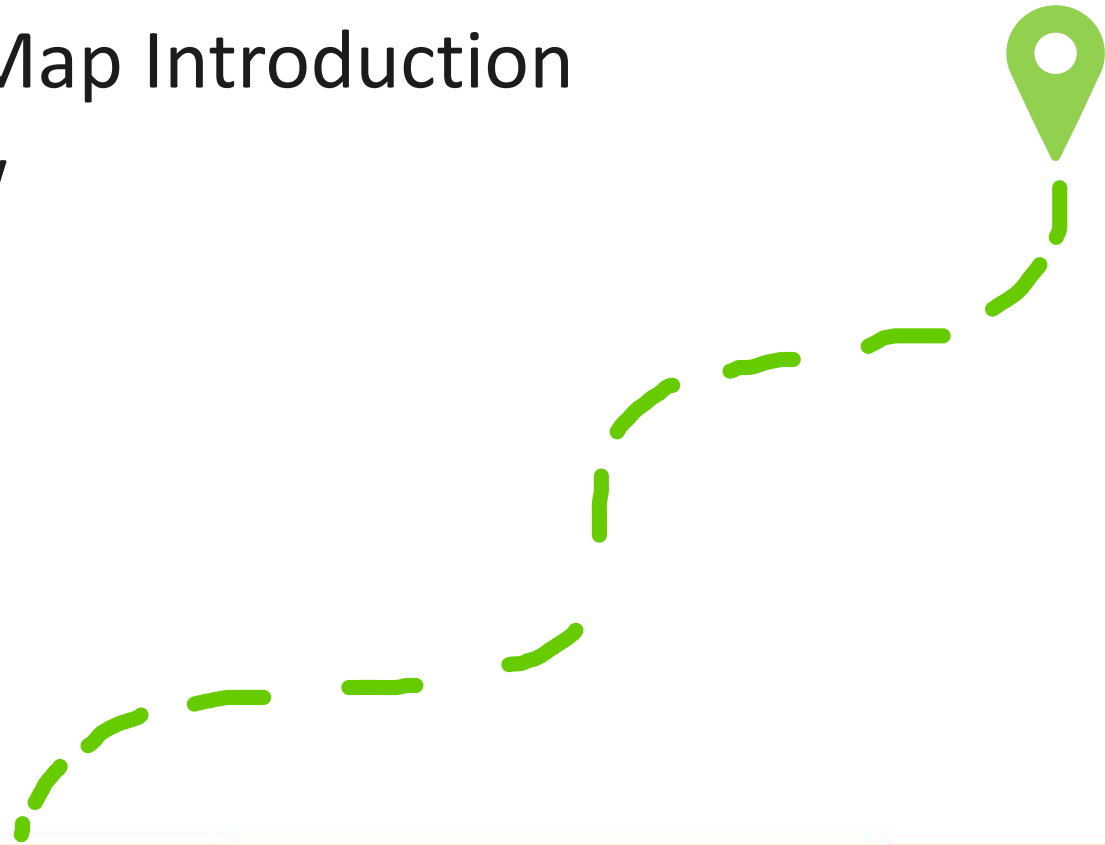
Adrienne Hampton (she/her)
Policy, Planning, and Innovation Analyst



KITSAP PUBLIC HEALTH DISTRICT

Introduction

- Overview and Process
- 2024 Draft Local Policy Map Introduction
- 2024 Legislative Preview
- Next Steps



What is the Policy Map?

- Expanded capacity for policy development
- Provides direction of what types of policy areas we will support and/or emphasis to promote systems level changes on distinct issues
- Specific focus on areas that public health has not been a primary lead
- Acts as an executive summary for future action plan and policy recommendations



Next Steps: Policy Development & Strategic Planning

- Partnerships and community engagement
- Formalize process for policy recommendations and interventions
- Generate local policy directives such as resolutions and other tools
- Strengthen existing inter-agency relationships
- Increase visibility of information and technical assistance opportunities
- Workforce development and trainings for staff



Next Steps: Community Health Implementation Plan

- The Public Health Accreditation Board (PHAB) reaccreditation guidance notes that the Community Health Improvement Plan (CHIP) needs to cover the following:
 - at least two health priorities; and
 - at least two of the strategies and/or activities in the CHIP must include a policy recommendation.
- The CHIP is one important method that generates specific ways public health can address community priorities and evaluation
- The Board will have a role in the policy aspects of the CHIP



Data and Assessment

- Understand topic areas that impact our community issue areas, broadly
 - Opioid related overdoses
 - Mental health, pediatrics, and OB providers and accessibility
 - % of community members rent burdened
- Formulate specific questions and using the data that we have – dive deeper to unpack specific solutions or evidence-based policy recommendations



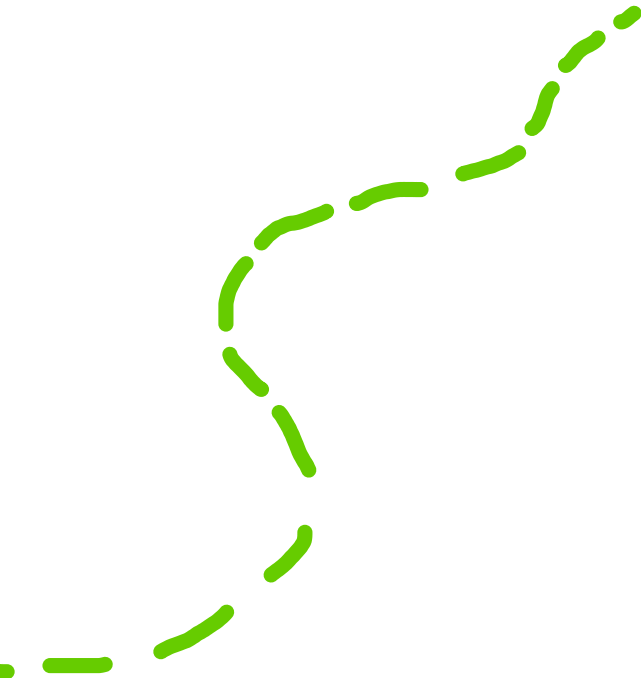
Visit Our Dashboards

Our epidemiologists regularly update health indicators that help us understand and evaluate population health issues.





2024 Draft Local Policy Map



2024 Draft Local Policy Map



Optimize
Foundational
Public Health
Services

Promote
Equitable
Access to
Quality
Healthcare
and Services

Respond to
Emerging
Public Health
Needs to
Increase
Health Equity

Support
Collective
Impact
Championed
by **Community**
Partners



2024 Draft Local Policy Map



**Optimize
Foundational
Public Health
Services**

- Kitsap Public Health District prevents disease and protects and promotes the health of all people in Kitsap County
- **Continued funding for Foundational Public Health Services (FPHS)** is critical to local public health infrastructure and the ability to respond to emerging health concerns



2024 Draft Local Policy Map

Promote Equitable Access to Quality Healthcare and Services

- **Support policies that improve healthcare delivery** and address clinical service gaps, strengthen healthcare workforce, and increase affordability of care
- **Advance a practice of equity** and enhance cultural competency in healthcare services to eliminate discrimination and bias in the healthcare system
- Read Kitsap County treads in Healthcare Access Fact sheet, Pregnancy & Birth, and Mental Health & Wellbeing



2024 Draft Local Policy Map

**Respond to
Emerging
Public Health
Needs to
Increase
Health Equity**

- **Expand resources** for substance use prevention, treatment, and recovery
- **Undo racist and inequitable barriers** that limit the community's ability to achieve their highest quality of life
- **Prepare communities** for health impacts caused by climate change and other environmental health risks
- Read Kitsap County treads in Demographics & Social Determinates of Health, Health Behaviors, and Environmental Health



2024 Draft Local Policy Map

**Support
Collective
Impact
Championed
by Community
Partners**

- **Improve the built environments** and expand accessible, multimodal transportation options
- **Bolster the health of existing housing options** and increase low-income housing, relief for people experiencing housing instability, and measures to prevent individuals from falling into homelessness
- **Support policies that increase health literacy**, public health education, social connectedness, and wellness





Legislative Preview



WSALPHO Legislative Preview

- **Data Access:** increasing LHJ access to statewide health-related data
- **Standing Orders:** give the Secretary of Health authority to write standing orders outside of emergency declarations
- **Micro-enterprise Home Kitchens:** authorizing and permitting home kitchens as food operations
- **Septage Capacity Assessment:** this is a carryover from the 2023 session and was not funded
- **State Board of Health School Rules Budget Proviso:** this is an ongoing budget item that WSALPHO has worked on since 2017



WSALPHO Legislative Preview

- **Child Fatality Review Modernization:** addressing outdated and confusing language in Washington’s Child Mortality Review Statute
- **Vaccine Definition Update/RSV Nirsevimab inclusion:** broadening the statutory language of “vaccine” to ensure coverage of RSV nirsevimab
- **Syphilis Treatment:** allow medical assistants (MAs) with telehealth access to a supervising clinician to provide intramuscular injections for syphilis treatment in the field



Thank you!

Contact:

Adrienne Hampton (she/her)

adrienne.hampton@kitsappublichealth.org

360-552-8563



2024 DRAFT Budget

Keith Grellner, Administrator

November 7, 2023



KITSAP PUBLIC HEALTH DISTRICT

Public Health is Legally Mandated Work

- RCWs 70.05 & 70.46
- Kitsap County Code Chapter 9.52
- And a host of other laws and codes that emanate from the above



Our **Vision** is a safe and healthy Kitsap County for all.

Our **Mission** is to prevent disease and protect and promote the health of all people in Kitsap County.



STRATEGIC PLAN INITIATIVES

2024-2030

Initiative 1

We stop the transmission of communicable diseases through prevention, early identification, and prompt and appropriate intervention.

Initiative 2

We support well-being and resilience for people at every stage of life by focusing on prevention, harm reduction, promotion of factors that positively impact health, and reduction of the factors that negatively impact health.

Initiative 3

We protect our community by promoting healthy environments and preventing unsafe environmental exposures.

Initiative 4

We act as a trusted communicator, convener, strategist, and advocate to promote an integrated response to emergent, emergency, and ongoing public health issues.

Initiative 5

We use sound management principles to maintain a sustainable, effective, and inclusive agency that supports a diverse and engaged workforce.



Kitsap Public Health District is Nationally Accredited

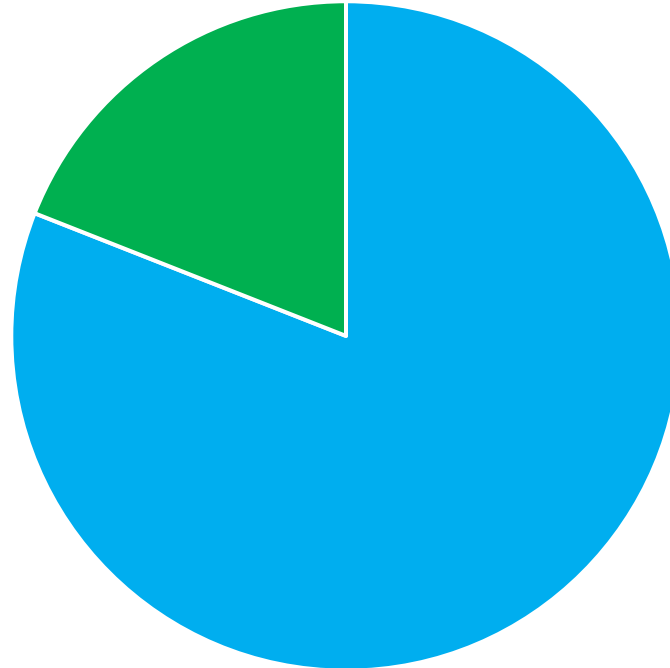


- Accredited since 2015
- One of only 320 local health jurisdictions nationally accredited
- One of only five local health jurisdictions accredited in Washington state



Draft 2024 Budget – Expenditure Summary

Non-Personnel
\$3,645,979 19%

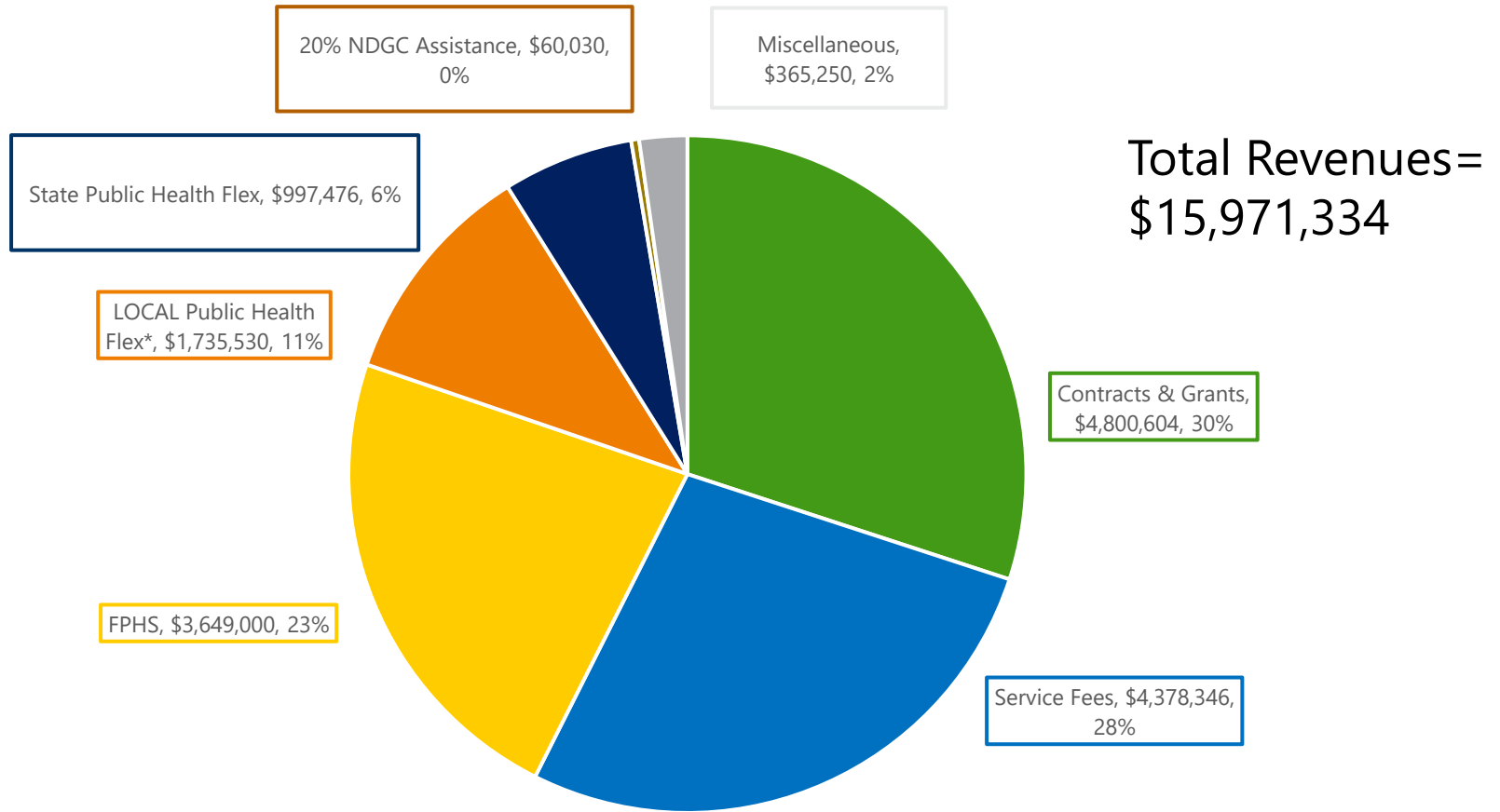


**Total Budget =
\$19,164,816**

Personnel
\$15,518,837 81%



Major Revenue Sources 2024



DRAFT 2024 Budget Notes

- Status quo budget requests of Board Member Jurisdictions (no increase over 2020 - 2023 annual contributions)
- Proposes use of \$3.18 M of reserves to balance budget (more on that later)
- Proposes EH Fee increase for food establishments and water recreation facilities, only (all other fees same as 2023), which may net an additional \$55K
- Staffing FTE's similar to 2021 - 2023 levels



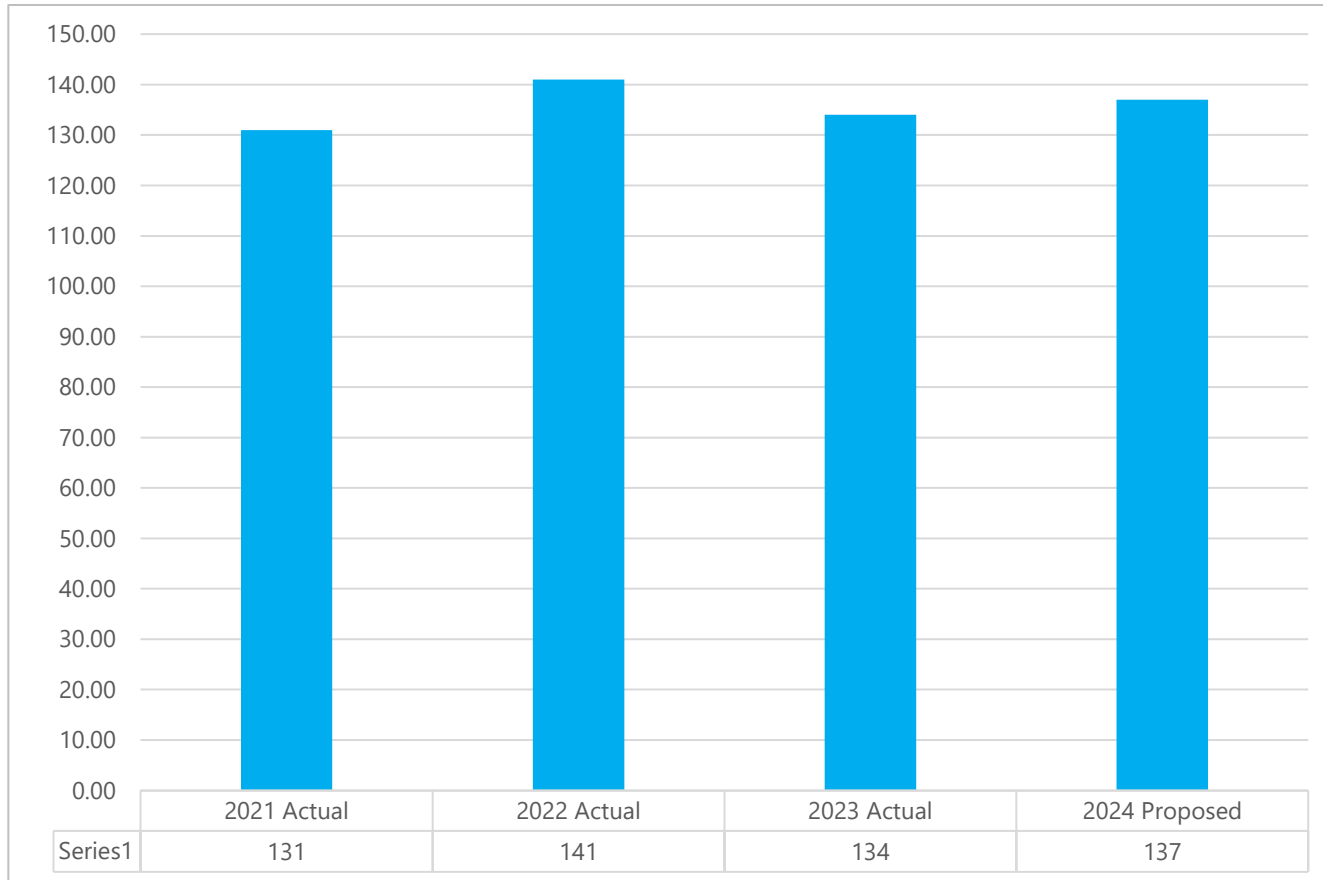
DRAFT 2024 Budget Notes (con't)

- Conservative budgeting – err higher for expenses and only count revenues “in-hand”
- Normally new revenues added during course of year after budget approved
- Normally expenses are less than budgeted by year’s end
- Therefore, use of reserve funds are less than budgeted by year’s end

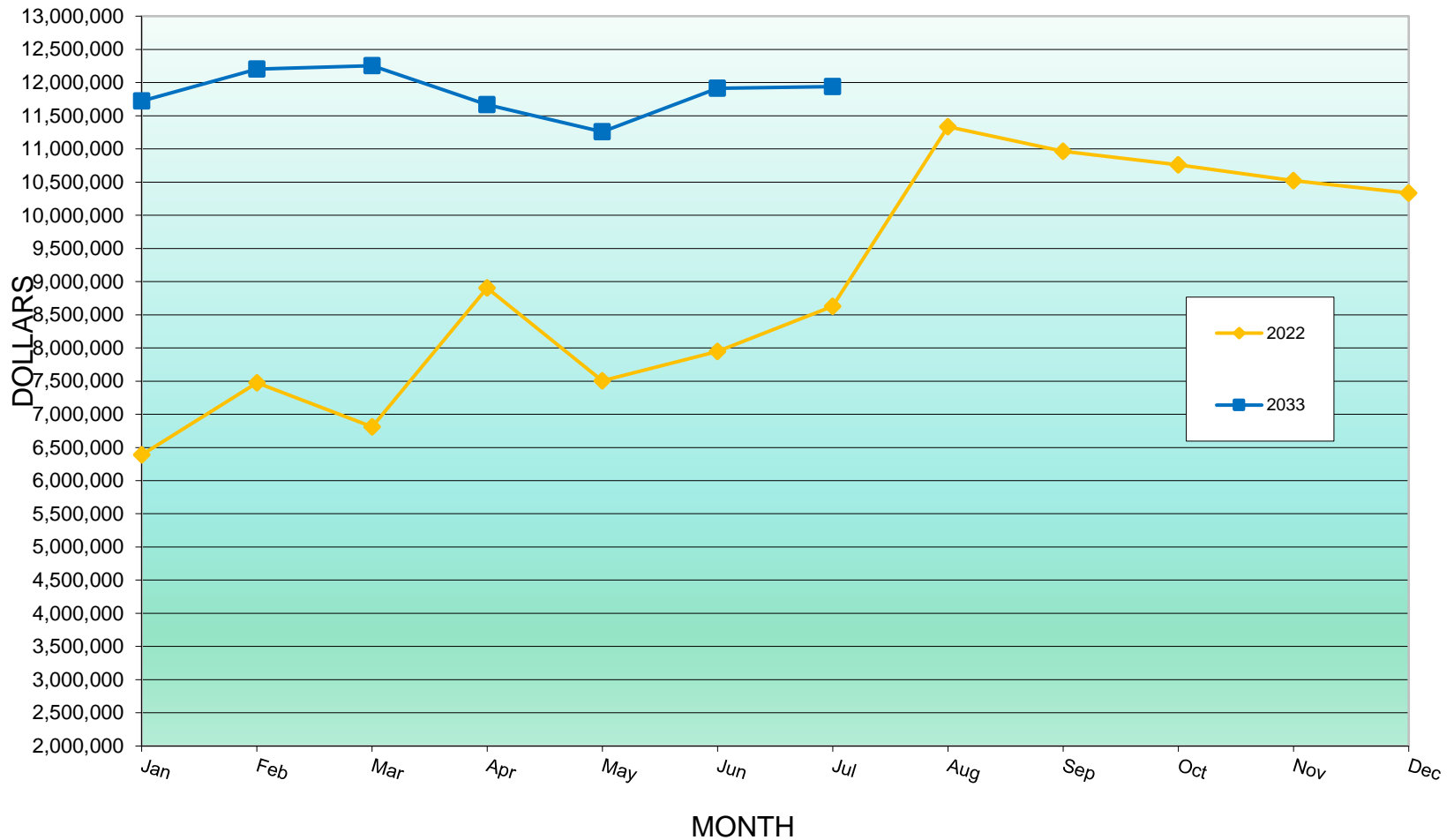
KPHD is in a positive budget situation for 2024



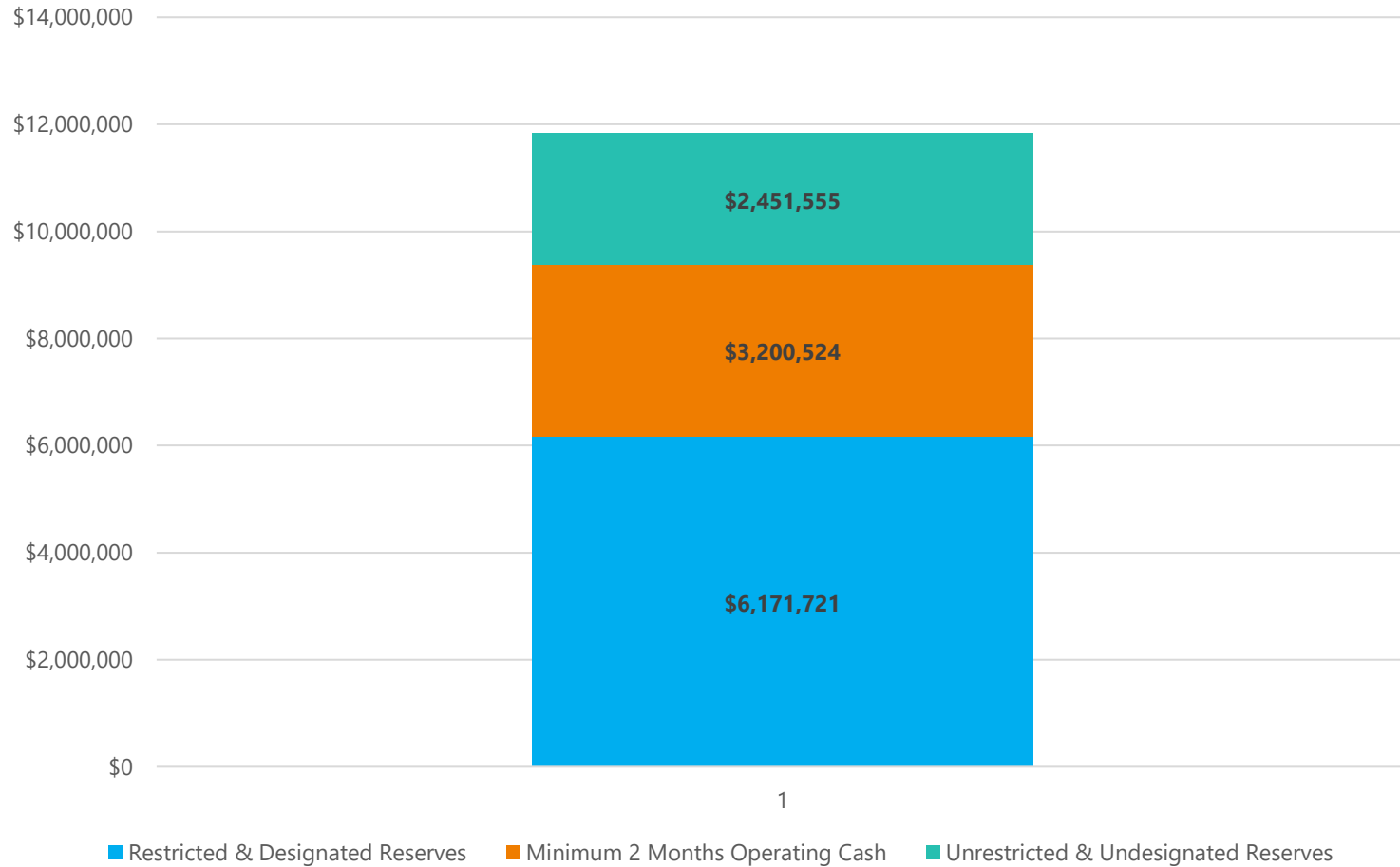
Staffing Full-Time Equivalents (FTE) 2021 – Proposed 2024



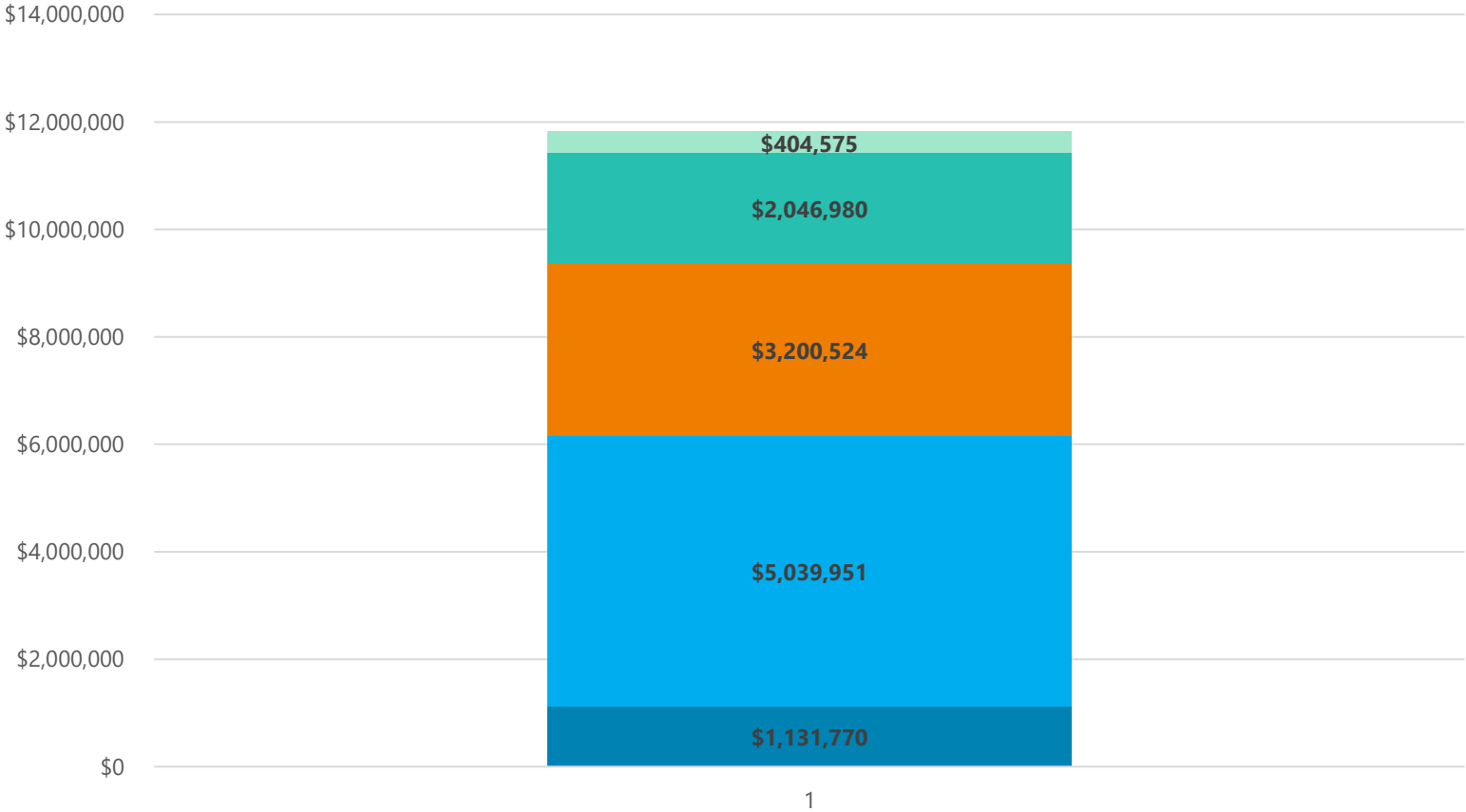
MONTH-END TOTAL CASH & INVESTMENTS (RESERVE FUND BALANCE)
2022 & 2023
As of July 31, 2023



RESERVE FUND BALANCE - BREAKDOWN OF BOARD-REQUIRED FUND TYPES As of July 31, 2023



PROPOSED RESERVE FUND USAGE & REMAINING BALANCE BY FUND TYPE DRAFT 2024 BUDGET



- Restricted & Designated Reserve Use
 ■ Restricted & Designated Reserve Balance
■ Minimum 2 Months Operating Cash
- Unrestricted & Undesignated Use
 ■ Unrestricted & Undesignated Balance

DRAFT 2024 Budget – Noteworthy Additions/New Investments Proposed

- \$200K for PCHS Respite Facility
- \$80K for Contractor for Salary Schedule Overhaul
- \$80K for Employment Law Attorney (Union Contract Negotiation Year in 2024)
- \$40K for New HR Database System Upgrade



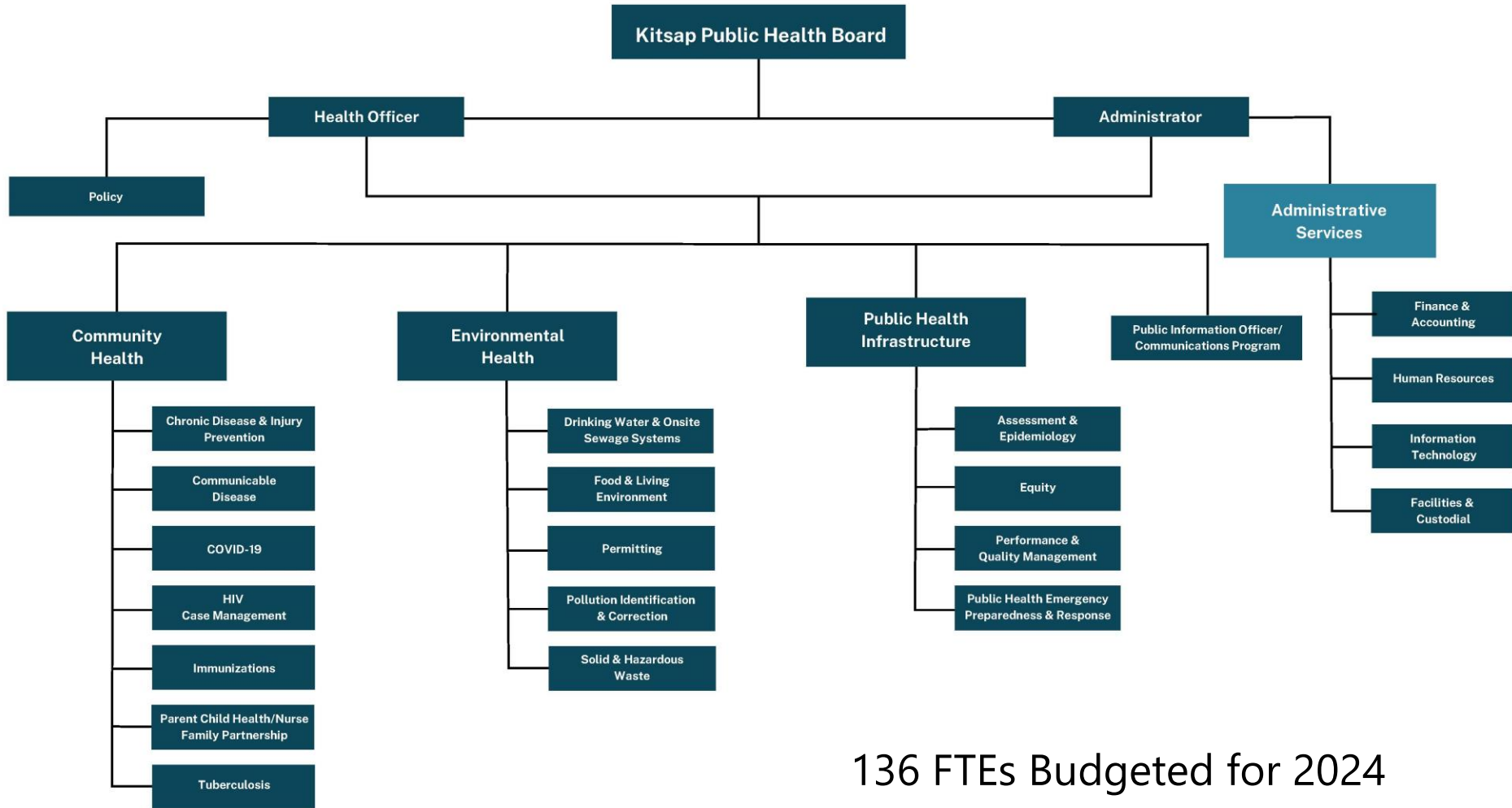
THANK YOU!

Questions?



Kitsap Public Health District Agency Organization Chart

Updated February 2023



136 FTEs Budgeted for 2024

Community Health Division

- Communicable Disease
- Sexually Transmitted Infections
- Tuberculosis
- HIV / AIDS
- Chronic Disease / Injury Prevention
- Immunizations
- Nurse Family Partnership
- Parent Child Health
- Substance Use Prevention & Response (Previously Syringe Exchange Services)



Environmental Health Division

- Drinking Water
- Onsite Sewage
- Pollution Identification & Correction
- Food & Living Environment
- Solid & Hazardous Waste
- School Environmental Health & Safety



Public Health Infrastructure Division

- Assessment & Epidemiology
- Public Health Emergency Preparedness & Response
- Equity
- Performance & Quality Management
- National Accreditation Oversight



Health Officer

- Policy & Innovation
- Healthcare Access (*New*)
- Healthcare Assessment



Administrative Services Division

- Executive Support for Health Board
- Human Resources
- Accounting & Finance
- Vital Records
- Clerical Support
- Information Technology
- Contracts
- Records Management
- Facility Maintenance



THANK YOU!

Questions?

