

Kitsap Public Health Board Health Officer Update

Gib Morrow, MD, MPH
Health Officer
September 3, 2024



KITSAP PUBLIC HEALTH DISTRICT

Agenda –

- September is Recovery (and Preparedness...) Month
- Infectious Disease Update
- One Health at KPHD – Publication in CDC MMWR
- Product Recall – Diamond Shruumz
- Healthcare Access and Costs
- Healthcare Assessment Progress Report (in packet)



September is National Recovery Month



- Substance use is common.
- EMS overdose responses tripled from 2019 to 2023 in Kitsap.
- Overdose deaths nearly tripled from 2017 to 2023 (80) in Kitsap.
- Recovery is real and possible.
- Treatment works and is available.
- If you or someone you know is struggling or in crisis, help is available. Call or text 988
- Opioid fatality reviews are legal and possible

https://public.tableau.com/app/profile/kitsap.public.health.district.assessment.and.epi.team/viz/DrugOverdosesinKitsapCounty_17204537888180/DrugOverdosesinKitsapCounty?publish=yes



Infectious Disease Update

- Mpox -surging in Africa and deemed a global public health emergency by WHO (current US risk is low); vaccination is 80% effective
- Summer COVID rise is tapering (but school starting)
- New COVID vaccines are approved for everyone 6 months and older (prior versions no longer used)
- RSV, COVID, and flu vaccines can be given together
- Advise against raw milk consumption (STEC)



Notes from the Field: Tularemia Associated with Harbor Seal Necropsy – Kitsap County, Washington, October 2023

Weekly / August 22, 2024 / 73(33);731–732

[Print](#)

Wendy Inouye, MS¹; Hanna N. Oltean, PhD²; Michelle McMillan, MPH¹; Hanna Schnitzler, DVM²; Beth Lipton, DVM²; JohnAric MoonDance Peterson³; Sylvia DuVernois³; Kevin Snekvik, DVM, PhD^{4,5}; Rebecca M. Wolking⁴; Jeannine Petersen, PhD⁶; Elizabeth A. Dietrich, PhD⁶; Laurel Respicio-Kingry, MS⁶; Gib Morrow, MD¹ ([VIEW AUTHOR](#))

- First detection of *F. tularensis* in a marine mammal
- Highly infectious (just 10-50 bacteria) via contact, aerosol, insects
- Potential use as a bioweapon (one of six top ones listed by CDC)
- Occupational risk for farmers, foresters, veterinarians
- Typically occurs in rabbits and rodents
- 200 cases nationwide yearly
- One Health in action at KPHD



Tularemia identified in biologist, dead seal that she dissected

Jim Stippes, August 22, 2024
Topic: Tularemia



Bridget Samuels / Flickr



Thanks to CD/EH/PHI teams



Home

Shop

Gummies

Mega Dose

Micro Dose



Home

Shop ▾

View Our Labs

Blog

Wholesale

RECALL NOTICE



Environmental Health Studies

EXPLORE TOPICS ▾

Q SEARCH

AUGUST 21, 2024

Severe Illness Potentially Associated with
Consuming Diamond Shruumz™ Brand
Chocolate Bars, Cones, and Gummies



DIAMOND SHRUUMZ STARTER PACK

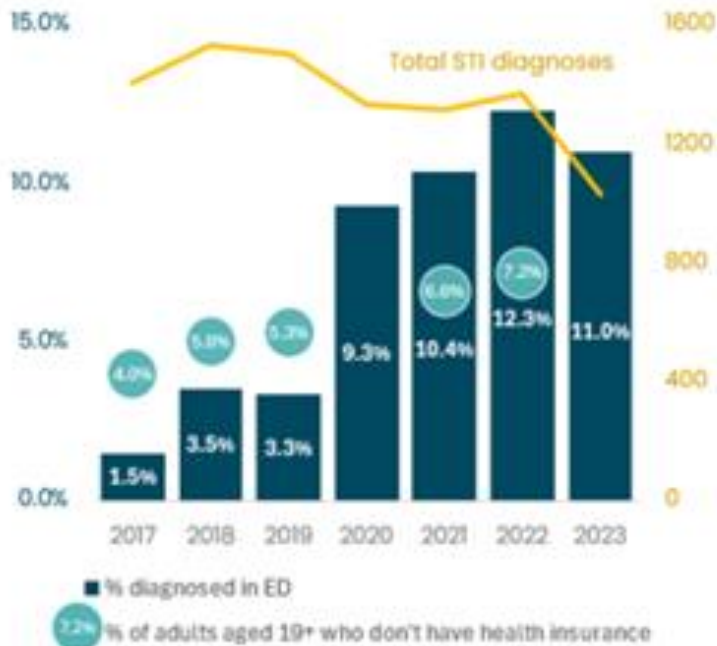
Chocolate Bars, Cones, Gummies



KITSAP PUBLIC HEALTH DISTRICT

STI Diagnoses in Emergency Departments

Proportion of Kitsap County chlamydia, gonorrhea and syphilis cases that were diagnosed by hospital emergency departments, 2017 – 2023 .



In 2023:

- 81 (10%) chlamydia cases
- 23 (12%) gonorrhea cases
- 9 (17%) syphilis cases

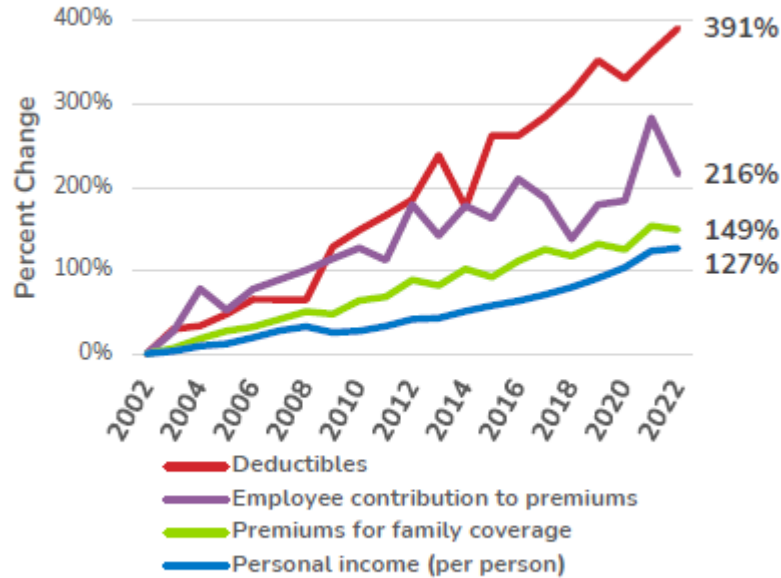
were diagnosed in an emergency room

More STIs are being diagnosed in EDs

- From 2017 to 2023, the number of chlamydia, gonorrhea, and syphilis cases diagnosed in emergency departments (EDs) has increased by over 5-fold.
- This increase started in 2020, when the COVID pandemic began.
- This may indicate shortages in sexual health services, or insurance limitations.

From the Health Care Authority

Figure 1. Health care premiums and deductibles outpacing income in Washington



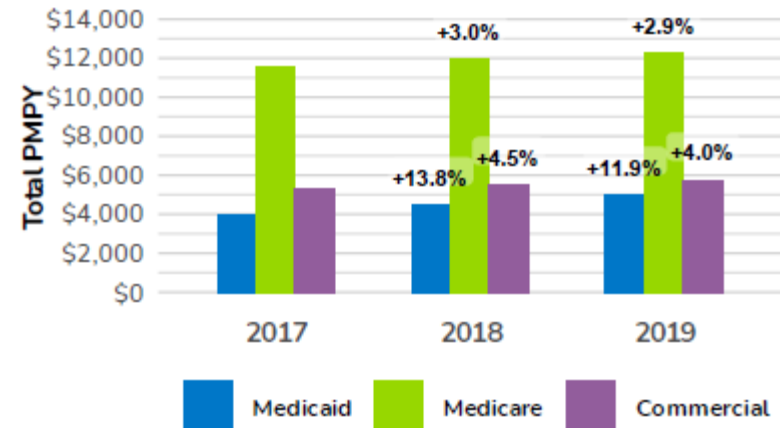
Source: The Bureau of Economic Analysis (BEA) and the Medical Expenditure Panel Survey (MEPS)

Figure 2. In 2022, 62% of WA respondents reported experiencing health care affordability burdens in the past 12 months



Source: Altarum's Consumer Healthcare Experience State Survey (CHESS)

Figure 3. Health care spending increasing across all markets, 2017 - 2019



Source: WA Benchmark Report: 2017-2019



Resources

- [National Recovery Month 2024](#)
- [WHO Director-General declares mpox outbreak a public health emergency of international concern](#)
- [COVID-19 Vaccine Information](#)
- [2024 E. Coli Outbreak Linked to Raw Milk Consumption](#)
- [Notes from the Field: Tularemia Associated with Harbor Seal Necropsy — Kitsap County, Washington, October 2023](#)
- [Tularemia identified in biologist, dead seal that she dissected](#)
- [An increase in sexually transmitted infections seen in US emergency departments](#)
- [Health care cost affordability; Why does health care cost so much?](#)
- [The Impact of Chronic Underfunding on America's Public Health System 2024: Trends, Risks, and Recommendations](#)

