

# Kitsap Public Health Board Health Officer Update

Gib Morrow, MD, MPH  
Health Officer  
September 3, 2024



KITSAP PUBLIC HEALTH DISTRICT

# Agenda –

- September is Recovery (and Preparedness...) Month
- Infectious Disease Update
- One Health at KPHD – Publication in CDC MMWR
- Product Recall – Diamond Shruumz
- Healthcare Access and Costs
- Healthcare Assessment Progress Report (in packet)



# September is National Recovery Month



- Substance use is common.
- EMS overdose responses tripled from 2019 to 2023 in Kitsap.
- Overdose deaths nearly tripled from 2017 to 2023 (80) in Kitsap.
- Recovery is real and possible.
- Treatment works and is available.
- If you or someone you know is struggling or in crisis, help is available. Call or text 988
- Opioid fatality reviews are legal and possible

[https://public.tableau.com/app/profile/kitsap.public.health.district.assessment.and.epi.team/viz/DrugOverdosesinKitsapCounty\\_17204537888180/DrugOverdosesinKitsapCounty?publish=yes](https://public.tableau.com/app/profile/kitsap.public.health.district.assessment.and.epi.team/viz/DrugOverdosesinKitsapCounty_17204537888180/DrugOverdosesinKitsapCounty?publish=yes)



# Infectious Disease Update

- Mpox -surging in Africa and deemed a global public health emergency by WHO (current US risk is low); vaccination is 80% effective
- Summer COVID rise is tapering (but school starting)
- New COVID vaccines are approved for everyone 6 months and older (prior versions no longer used)
- RSV, COVID, and flu vaccines can be given together
- Advise against raw milk consumption (STEC)



# Notes from the Field: Tularemia Associated with Harbor Seal Necropsy – Kitsap County, Washington, October 2023

Weekly / August 22, 2024 / 73(33);731–732

[Print](#)

Wendy Inouye, MS<sup>1</sup>; Hanna N. Oltean, PhD<sup>2</sup>; Michelle McMillan, MPH<sup>1</sup>; Hanna Schnitzler, DVM<sup>2</sup>; Beth Lipton, DVM<sup>2</sup>; JohnAric MoonDance Peterson<sup>3</sup>; Sylvia DuVernois<sup>3</sup>; Kevin Snekvik, DVM, PhD<sup>4,5</sup>; Rebecca M. Wolking<sup>4</sup>; Jeannine Petersen, PhD<sup>6</sup>; Elizabeth A. Dietrich, PhD<sup>6</sup>; Laurel Respicio-Kingry, MS<sup>6</sup>; Gib Morrow, MD<sup>1</sup> ([VIEW AUTHOR](#))

- First detection of *F. tularensis* in a marine mammal
- Highly infectious (just 10-50 bacteria) via contact, aerosol, insects
- Potential use as a bioweapon (one of six top ones listed by CDC)
- Occupational risk for farmers, foresters, veterinarians
- Typically occurs in rabbits and rodents
- 200 cases nationwide yearly
- One Health in action at KPHD



## Tularemia identified in biologist, dead seal that she dissected

Jim Stippes, August 22, 2024  
Topic: Tularemia



Bridget Samuels / Flickr



# Thanks to CD/EH/PHI teams



Home

Shop

Gummies

Mega Dose

Micro Dose

Home

Shop ▾

View Our Labs

Blog

Wholesale

## RECALL NOTICE



Environmental Health Studies

EXPLORE TOPICS ▾

SEARCH

AUGUST 21, 2024

Severe Illness Potentially Associated with  
Consuming Diamond Shruumz™ Brand  
Chocolate Bars, Cones, and Gummies



### DIAMOND SHRUUMZ STARTER PACK

Chocolate Bars, Cones, Gummies

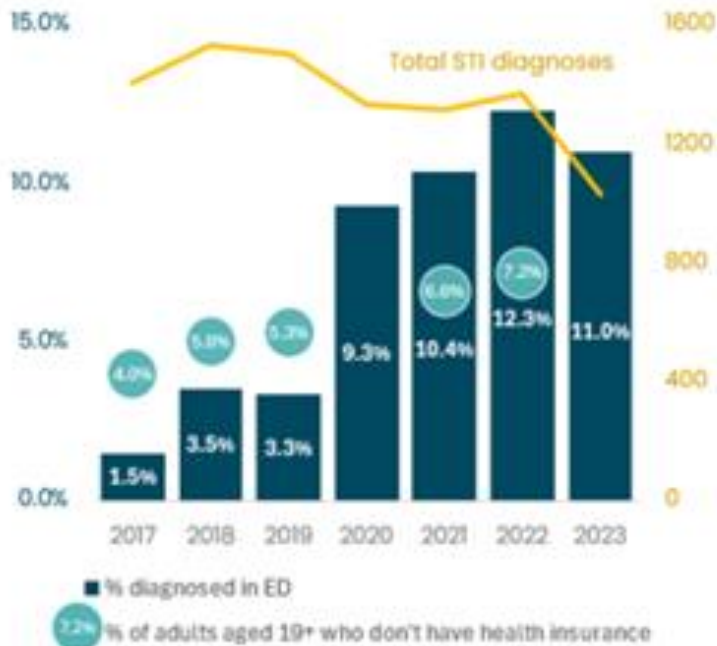


KITSAP PUBLIC HEALTH DISTRICT



# STI Diagnoses in Emergency Departments

Proportion of Kitsap County chlamydia, gonorrhea and syphilis cases that were diagnosed by hospital emergency departments, 2017 – 2023 .



In 2023:

- 81 (10%) chlamydia cases
- 23 (12%) gonorrhea cases
- 9 (17%) syphilis cases

were diagnosed in an emergency room

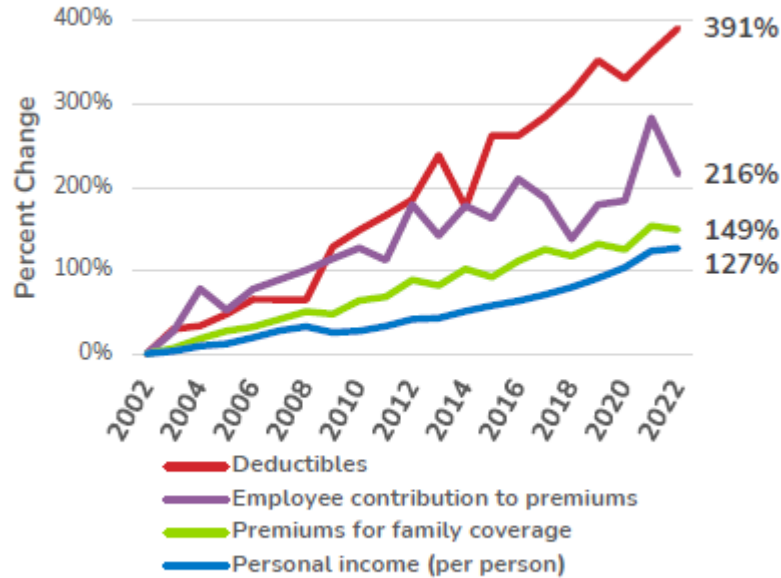
## More STIs are being diagnosed in EDs

- From 2017 to 2023, the number of chlamydia, gonorrhea, and syphilis cases diagnosed in emergency departments (EDs) has increased by over 5-fold.
- This increase started in 2020, when the COVID pandemic began.
- This may indicate shortages in sexual health services, or insurance limitations.



# From the Health Care Authority

**Figure 1. Health care premiums and deductibles outpacing income in Washington**



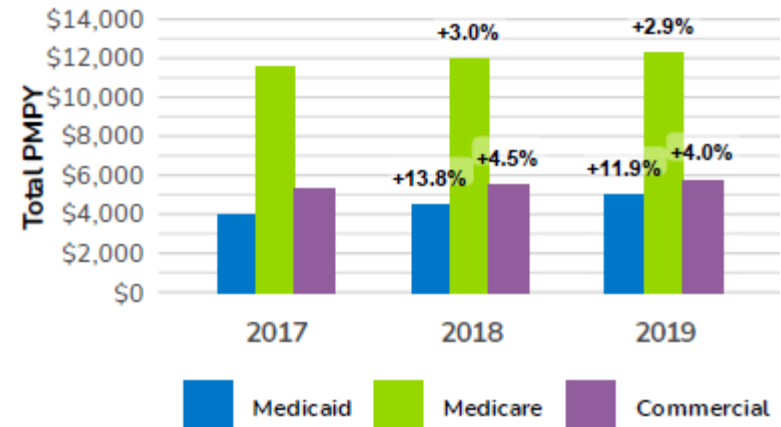
Source: The Bureau of Economic Analysis (BEA) and the Medical Expenditure Panel Survey (MEPS)

**Figure 2. In 2022, 62% of WA respondents reported experiencing health care affordability burdens in the past 12 months**



Source: Altarum's Consumer Healthcare Experience State Survey (CHESS)

**Figure 3. Health care spending increasing across all markets, 2017 - 2019**



Source: WA Benchmark Report: 2017-2019





# Resources

- [National Recovery Month 2024](#)
- [WHO Director-General declares mpox outbreak a public health emergency of international concern](#)
- [COVID-19 Vaccine Information](#)
- [2024 E. Coli Outbreak Linked to Raw Milk Consumption](#)
- [Notes from the Field: Tularemia Associated with Harbor Seal Necropsy — Kitsap County, Washington, October 2023](#)
- [Tularemia identified in biologist, dead seal that she dissected](#)
- [An increase in sexually transmitted infections seen in US emergency departments](#)
- [Health care cost affordability; Why does health care cost so much?](#)
- [The Impact of Chronic Underfunding on America's Public Health System 2024: Trends, Risks, and Recommendations](#)

