



KITSAP PUBLIC  
HEALTH DISTRICT



# PROGRAM GUIDE 2024

# ABOUT KITSAP PUBLIC HEALTH



## OUR VISION

A safe and healthy  
Kitsap County for all

## OUR MISSION

We prevent disease and protect and promote  
the health of all people in Kitsap County.

## ← IN THIS GUIDE

### About Kitsap Public Health

- How we are funded
- How we are organized
- Connecting with us

### Program Snapshots

- Brief overviews of each of our programs that provide services or information to the public.

**T**he Kitsap Public Health District has protected the health of all people in Kitsap County since 1947.

Every day, our team of more than 100 public health professionals works to prevent diseases and injuries, promote health and wellbeing, and create safe and supportive environments where everyone can thrive.

Our agency is overseen by the Kitsap Public Health Board, composed of local elected officials, tribal representatives, and community members.

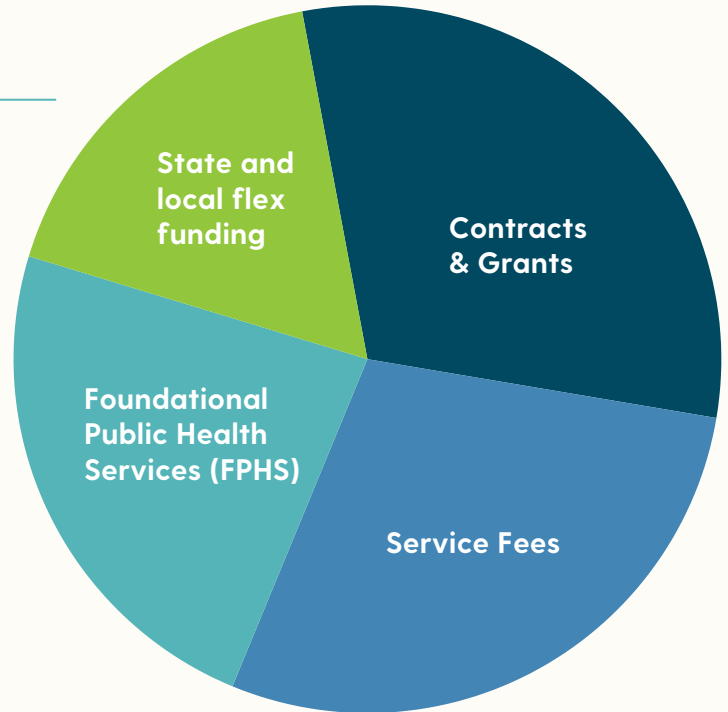
We are here to serve you! Find more information at [kitsappublichealth.org](http://kitsappublichealth.org), call us at 360-728-2235, or visit us at our offices in downtown Bremerton.

## HOW WE ARE FUNDED

Kitsap Public Health District receives a mix of local, state, and federal money to provide services that keep Kitsap County safe and healthy.

The Kitsap Public Health Board approves our budget each year. For 2024, our total budget is \$19.2 million.

You can view our budget and other financial information online at [kitsappublichealth.org/about](https://kitsappublichealth.org/about)



### Contracts & grants

Outside organizations award contracts and grants to Kitsap Public Health to carry out specific work.

**Example:** The State Office of the Superintendent of Public Instruction contracts with us to provide summer food service inspections.

### Service fees

Kitsap Public Health charges fees to people and businesses to cover the costs of providing permits, licenses, and other services.

**Example:** Restaurants pay a yearly fee for their food service establishment permit.

### State & local flex funding

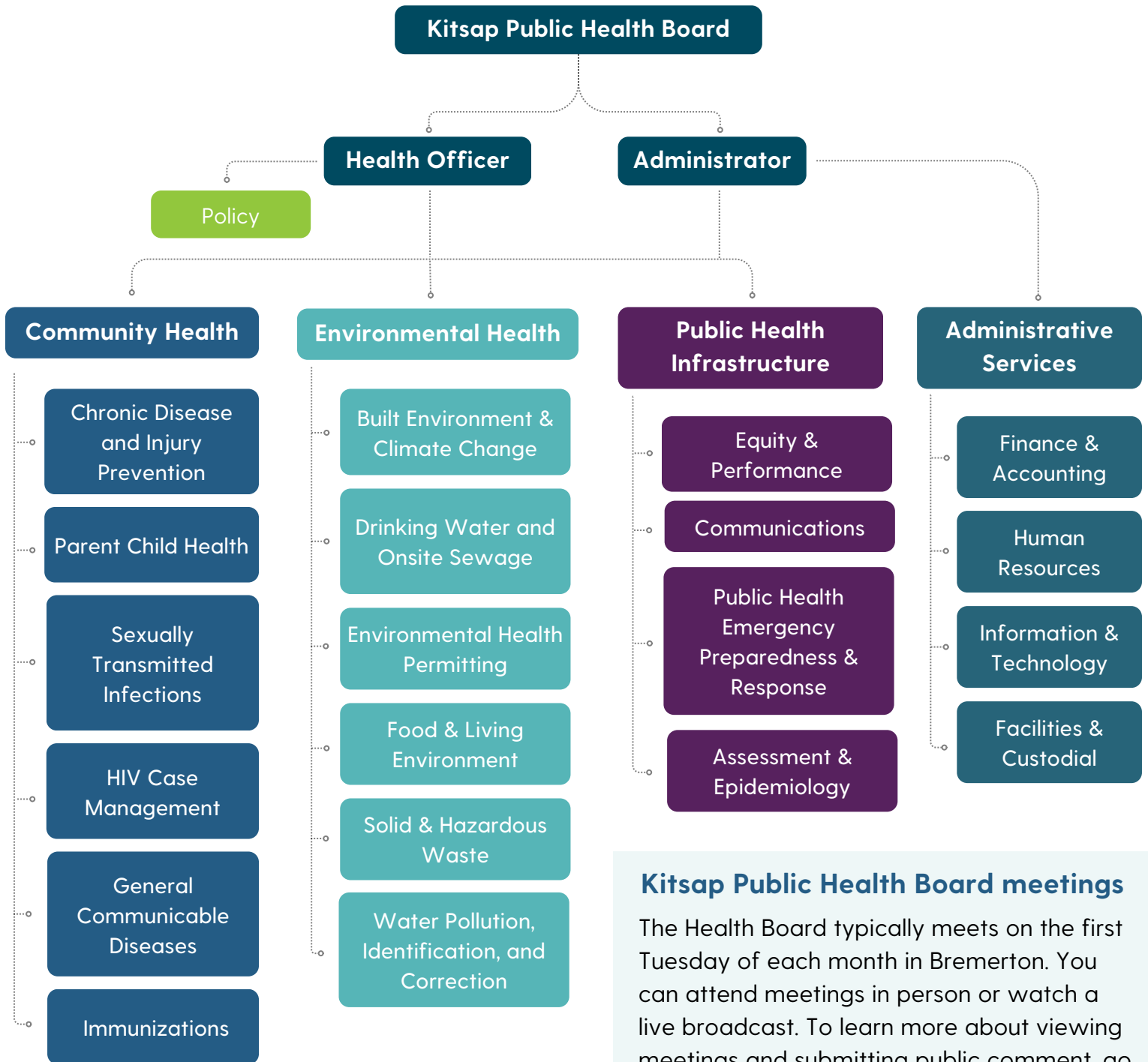
Kitsap Public Health receives flexible funding from the Washington State Department of Health and contributions from Kitsap County and the cities of Bainbridge Island, Bremerton, Port Orchard and Poulsbo. These funds can be used to support any public health activity.

### Foundational Public Health Services (FPHS) funding

Foundational Public Health Services are core public health services needed to protect the health of all residents. Often, these services are not fully paid for by contracts, grants, fees and other traditional funding sources. Kitsap Public Health receives FPHS funding through the Washington State Department of Health to ensure vital public health services are available in our county.

# HOW WE ARE ORGANIZED

Our agency is divided into four divisions: Community Health, Environmental Health, Public Health Infrastructure, and Administrative Services. Programs within each division carry out specific work.



## Kitsap Public Health Board meetings

The Health Board typically meets on the first Tuesday of each month in Bremerton. You can attend meetings in person or watch a live broadcast. To learn more about viewing meetings and submitting public comment, go to: [kitsappublichealth.org/about](https://kitsappublichealth.org/about).

## CONNECT WITH US



### 360-728-2235

Our switchboard is staffed 8 a.m. to 4:30 p.m., Monday-Friday. An after-hours answering service is available.



### Visit our office

Our front counter is open 9 a.m. to 4 p.m., Monday-Friday at 345 6th Street, Suite 300, Bremerton.

**Language support:** Bilingual employees provide onsite Spanish language support. Interpretation can be arranged for other languages.



### Get email & text updates

Sign up to receive public health updates and advisories at [kitsappublichealth.org/subscribe](https://kitsappublichealth.org/subscribe)



### Report health concerns

To report a public health concern, call 360-728-2235 or go to: [kitsappublichealth.org/concern](https://kitsappublichealth.org/concern)

## Follow us on social media



[KitsapPublicHealth](https://www.facebook.com/KitsapPublicHealth)



[KitsapPublicHealth](https://www.instagram.com/KitsapPublicHealth)



[KitsapHealth](https://twitter.com/KitsapHealth)



[Kitsap Public Health District](https://www.linkedin.com/company/KitsapPublicHealthDistrict)



**Nextdoor**

[Kitsap Public Health](https://www.nextdoor.com/KitsapPublicHealth)

# Administrative Services

Division: Administrative Services

## What we do

Kitsap Public Health District's Administrative Services Division offers friendly and efficient service to the public while providing administrative support to all Health District programs.

## How we work

Services we provide to the public include:

- **Customer service** through our front counter and switchboard.
- **Vital records** - We help the public obtain birth and death certificates.
- **Public records** - We fulfill public records requests per the Washington State Public Records Act.
- **Accounting** - Processing fees related to public health permits and services.

Learn more about key services at [kitsappublichealth.org/information](https://kitsappublichealth.org/information)

# Assessment & Epidemiology

Division: Public Health Infrastructure

## What we do

Kitsap Public Health District's Assessment & Epidemiology Program provides information about our environment and the social, economic, mental, and physical health and wellbeing of Kitsap residents so that Health District programs, leadership, and community partners are equipped to identify issues, prioritize resources, and take action.

## How we work

Our work includes:

- Providing data monitoring and analysis of local health trends for community partners and Health District programs;
- Producing community health assessments, annual health indicators, and more detailed reports on topics of interest;
- Identifying and highlighting health inequities and disparities;
- Collaborating with community partners and Kitsap residents on the meaningful interpretation of data;
- Offering spatial analysis and mapping services.

You can learn more about our work and access data reports at [kitsappublichealth.org/data](https://kitsappublichealth.org/data)



# Communications

Division: Public Health Infrastructure

## What we do

Kitsap Public Health District's Communications Program shares timely, accurate, and understandable information to help residents protect and improve their health. We collaborate with Health District programs on public information and education campaigns, assist with internal communications, and provide input on policies and strategies related to communication.

## How we work

Our work includes:

- Disseminating health advisories, news releases, and other timely public health communications;
- Managing content on the Health District's website and social media accounts;
- Creating and updating reports, fact sheets, infographics, videos, brochures and other educational materials;
- Responding to inquiries from the news media and the public;
- Working with Health District programs to plan and implement public information and education campaigns;
- Representing the Health District at public events and meetings;
- Supporting outreach activities across all programs.



# Chronic Disease & Injury Prevention

Division: Community Health

## What we do

Kitsap Public Health's Chronic Disease & Injury Prevention team focuses on health supporting health across the human lifespan. Our program works in and with the community to promote healthy behaviors and reduce risks through collaboration, and education.

## How we work

Our work includes:

- **Healthy Eating and Active Living** - We collaborate with partners to improve equitable access to nutritious foods, lactation support, and environments that encourage active living. We work in schools, farmers markets, food banks, affordable housing, and healthcare.
- **Injury Prevention** - We support creative solutions to help keep communities safe from all kinds of injuries. We work closely with community members and organizations to offer education, training, and resources.
- **Substance Use Prevention & Response** - We provide trauma-informed training to reduce impacts from illicit substances, vaping, commercial tobacco, and youth cannabis use. We bring together partners to implement strategies that promote protective factors to reduce substance use.
- **Healthy Aging** - We work with the Washington State Department of Health, Kitsap County Division of Aging and Long-Term Care, and Trust for America's Health to support the creation of an age-friendly public health system.

# General Communicable Disease

Division: Community Health

## What we do

Kitsap Public Health District's Communicable Disease (CD) Program tracks, investigates, and works to control the spread of infectious diseases. We keep residents healthy by monitoring and responding to new health risks and educating the community and healthcare providers about disease prevention and evidence-based treatments.

## How we work

Our team aims to prevent the spread of diseases that can be passed from person to person, with emphasis on:

- Hepatitis A and Hepatitis B;
- Tuberculosis, including immigration screenings;
- Enteric illness, including potential foodborne and/or waterborne illness outbreaks;
- Emerging diseases and disease outbreaks (such as COVID-19 and mpox);
- Employee health services;
- Certain healthcare associated infections (HAI) and antimicrobial-resistant infections of public health significance.



## Drinking Water & Onsite Sewage

Division: Environmental Health

### What we do

Kitsap Public Health District's Drinking Water & Onsite Sewage (DWOS) Program ensures drinking water wells and septic systems are properly installed, maintained, and protected to prevent pollution and reducing the risk of illness. These services are vital in a county where tens of thousands of households rely on wells and septic systems.

### How we work

Our program fulfills several important regulatory functions, including:

- Inspecting septic systems and wells at the time of property sale;
- Inspecting well sites and septic designs prior to installation;
- Reviewing plans for drainfield repairs when septic systems are no longer functioning;
- Inspecting large public water systems (or Group A water systems) for compliance on behalf of the Washington State Department of Health (DOH);
- Regulating more than 800 small water systems (or Group B water systems);
- Inspecting well construction and decommissioning on behalf of the Washington State Department of Ecology (DOE);



**PROGRAM SNAPSHOT**

# Environmental Health Permitting

Division: Environmental Health

## What we do

Kitsap Public Health District's Environmental Health Permitting Program is frequently the public's first and last point of contact with Environmental Health (EH) services at the Health District. We provide direct customer service to the public at the front counter and over the phone, while working behind the scenes to keep our Environmental Health programs operating efficiently.

## How we work

Our work includes:

- Providing customer service for Environmental Health programs;
- Processing applications and permits;
- Routing complaints for regulatory response;
- Keeping accurate, consistent records;
- Responding to inquiries or connecting community members with program staff.



## PROGRAM SNAPSHOT

# Equity & Performance

Division: Public Health Infrastructure

## What we do

Kitsap Public Health District's Equity and Performance Program oversees two vital functions: Advancing equity and antiracist work internally and in the community and ensuring Kitsap Public Health is an effective, strategic, and accountable agency.

## How we work

Our **equity** work includes:

- Leading efforts to develop, support, implement, and evaluate initiatives outlined in Kitsap Public Health Board Resolution 2021-01, Declaring Racism a Public Health Crisis;
- Building relationships with communities experiencing health inequities through attending events, participating in community initiatives, and other forms of outreach and engagement;
- Facilitating the Kitsap Health Equity Collaborative to identify and implement shared solutions and collective actions, promote pro-equity policies, and amplify the voices of communities most affected by systemic inequities, including racism;
- Facilitating, participating in, and tracking Health District activities – both internal and co-created with partner agencies – to address systemic inequities.

Our **performance** work includes:

- Collaborating with Health District programs to develop plans, implement quality improvements, and monitor outcomes;
- Overseeing the Health District's process to achieve maintain accreditation with the Public Health Accreditation Board.



PROGRAM SNAPSHOT

## Food & Living Environment

Division: Environmental Health

### What we do

Kitsap Public Health District's Food & Living Environment Program inspects and provides education and assistance to food establishments and water recreation facilities to reduce foodborne and waterborne illness. We also respond to concerns of people smoking and vaping in public places.

### How we work

Our work is focused on preventing and investigating foodborne and waterborne illness. Our work includes:

- Regulating, inspecting, and providing education to all permitted food establishments in Kitsap County, including restaurants, commercial kitchens, caterers, and food vendors at events.
- Regulating, inspecting, and providing education to water recreation facilities, including public pools, hot tubs, wading pools, and spray pads
- Investigating reports of potential foodborne illness.
- Investigating reports of waterborne illness, injuries, and deaths related to water recreation facilities.
- Investigating complaints of vaping and smoking in public places

# HIV Medical Case Management

Division: Community Health

## What we do

Kitsap Public Health District's HIV Medical Case Management Program helps people living with HIV/AIDS in Kitsap, Clallam, Jefferson, and north Mason counties to lead healthy lives and reduce the transmission of HIV to others. Our program connects clients with needed health and social services and provides opportunities for clients to learn and socialize together.

## How we work

Our team supports the health and wellbeing of people living with HIV/AIDS and promotes healthy behaviors to prevent HIV transmission. Services offered include:

- Medical case management services;
- Peer navigation and outreach services;
- Short-term and long-term housing support;
- Food assistance;
- Medical transportation;
- Clinical quality management.

# Immunizations

Division: Community Health

## What we do

Kitsap Public Health District's Immunizations Program serves as a resource to the public and our healthcare community on immunization best practices, access, and education. We work with providers, local partners, and the Washington State Department of Health to increase immunization rates.

## How we work

Our work includes:

- Increasing access to immunizations by collaborating with partners to offer immunization clinics serving schools, community organizations, and the public;
- Helping the public access, update, and verify immunization records;
- Promoting the safety and effectiveness of vaccines through community presentations, outreach at events, and public information campaigns;
- Implementing Vaccine for Children (VFC) Olympic Region compliance work and operating the Immunization Quality Improvement Program (IQIP) for the Olympic Region (Kitsap, Clallam, Jefferson and Mason counties);
- Supporting immunization providers in the community with technical information and logistics support;



## Parent Child Health

Division: Community Health

### What we do

Kitsap Public Health District's Parent Child Health program offers support and education to people who are pregnant, parents of young children, and families to ensure all Kitsap children can thrive in safe, healthy, and nurturing environments.

### How we work

Our work includes:

- Coordinating our regional Nurse-Family Partnership program, which pairs first-time mothers with a nurse to assist them from their first trimester of pregnancy through the first two years of their child's life;
- Implementing the Children and Youth with Special Health Care Needs program to help parents find the resources they need and working to ensure resources are available in our community;
- Providing Childcare Nurse Consultant services to promote health and safety at childcare centers;
- Supporting breastfeeding and chestfeeding through the Kitsap Supports Breastfeeding campaign and other initiatives;
- Leading the Mama Moves Kitsap postpartum group to encourage healthy activity and social connections for new parents;
- Organizing care coordination to assist families in navigating home visiting and other services in Kitsap County, a resource to determine which service(s) would best fit their needs;
- Innovating the healthcare space for local moms with Black Infant Thrive, a program launching in 2024 to improve health outcomes for Black mothers and infants in Kitsap.

# Public Health Emergency Preparedness & Response

Division: Public Health Infrastructure

## What we do

Kitsap Public Health District's Public Health Emergency Preparedness & Response (PHEPR) Program works to ensure that public health, healthcare systems, communities, and individuals are prepared to prevent, quickly respond to, and recover from emergencies. Our goal is to promote a culture of preparedness that helps prevent disease, injury, death, and disability during an emergency.

## How we work

Our work is organized around the Centers for Disease Control & Prevention (CDC) model to promote emergency preparedness at the local level. Activities include:

- Updating plans that outline how our agency will respond to an emergency, and how we will work with other agencies, community organizations, and community members;
- Working to ensure that Emergency Support Function partners (fire, EMS, health care, and public health) can collaborate effectively during a response and know each other's goals and objectives;
- Overseeing Kitsap County's Medical Reserve Corps, a trained group of medical volunteers who support public health response during a public health emergency;
- Preparing our agency to respond to emergencies as efficiently as possible to promote and protect the health of Kitsap residents;
- Building knowledge and capacity, writing preparedness plans, and conducting trainings and exercises.

## Solid & Hazardous Waste

Division: Environmental Health

### What we do

The Solid & Hazardous Waste Program protects the health of Kitsap residents and promotes safe environments by preventing pollution from solid and hazardous waste. We respond to complaints from community members and work proactively with businesses and other organizations to ensure waste is handled, stored, and disposed of properly.

### How we work

We provide a number of important regulatory, enforcement, and educational services, including:

- Overseeing the cleanup of unsanitary, unsafe solid waste accumulations through the enforcement of local solid waste regulations;
- Inspecting solid waste facilities for compliance with regulations and permitting;
- Offering technical Pollution Prevention Assistance to businesses;
- Providing environmental health assessments for schools and summer camps.

# Sexually Transmitted Infections

Division: Community Health

## What we do

Kitsap Public Health District's Sexually Transmitted Infections (STI) Program protects the health of Kitsap residents and prevents the spread of STIs by supporting access to testing and treatment, partnering with healthcare providers, and providing education in our community.

## How we work

Our team focuses on prevention of HIV, syphilis, chlamydia, and gonorrhea. Our work includes:

- Investigating STI cases and connecting people to treatment, testing, and other resources;
- Monitoring local STI case rates and creating strategies to address emerging trends;
- Partnering with healthcare organizations providing testing and treatment for STIs;
- Working with community partners to reduce barriers to care for populations at higher risk of exposure to STIs.
- Providing STI education in schools.



# Water Pollution Identification & Correction

Division: Environmental Health

## What we do

Kitsap Public Health District's Water Pollution & Identification Correction Program works to keep local waterbodies clean and safe for recreation by tracking and fixing pollution from septic systems, sewers, animal waste, and other sources. We provide community education and monitor water quality in streams and at swimming beaches to prevent waterborne illness.

## How we work

Our work includes:

- Responding to reports of pollution caused by waste, primarily from septic systems, agriculture and pets;
- Conducting shoreline monitoring to check for pollution in water flowing into Puget Sound;
- Monitoring for bacteria in streams, lakes, and beaches, and alerting the public to health risks;
- Monitoring for dangerous shellfish biotoxins, in partnership with the Washington State Department of Health;
- Educating the public about health risks from sewage spills and posting sewage spill advisories;
- Educating homeowners about septic systems and animal waste.