

WE'RE PROTECTING OUR FAMILIES FROM COVID-19



In response to Public Health direction, we:

- ✓ Screen caregivers and children daily for fever, cough, and shortness of breath.



- ✓ Ensure sick caregivers and children stay home.



- ✓ Ensure that children and caregivers frequently wash their hands.



- ✓ Clean and sanitize surfaces frequently.



Please help in protecting our community:

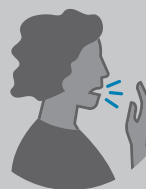
- Check your child's temperature daily.



- Keep children home if they are sick.



- Do not enter the child care if you are sick.



ADAPTED WITH PERMISSION FROM KING COUNTY DESIGN AND CIVIC ENGAGEMENT



KITSAP PUBLIC
HEALTH DISTRICT

STEPS TO MINIMIZE RISK OF COVID-19



In response to Public Health direction,
take these steps:

- ✓ Screen employees and children daily for fever, cough, and shortness of breath.



- ✓ Send sick employees and children home.



- ✓ Allow high risk employees to stay home (people over 60, pregnant people, medical conditions).



- ✓ Ensure frequent handwashing by everyone.



- ✓ Regularly clean and disinfect frequently touched surfaces (e.g. doorknobs, toys, etc.).



KCIT DCE I0081 childcare

ADAPTED WITH PERMISSION FROM KING COUNTY DESIGN AND CIVIC ENGAGEMENT

- ✓ Ask employees to read this information sheet.