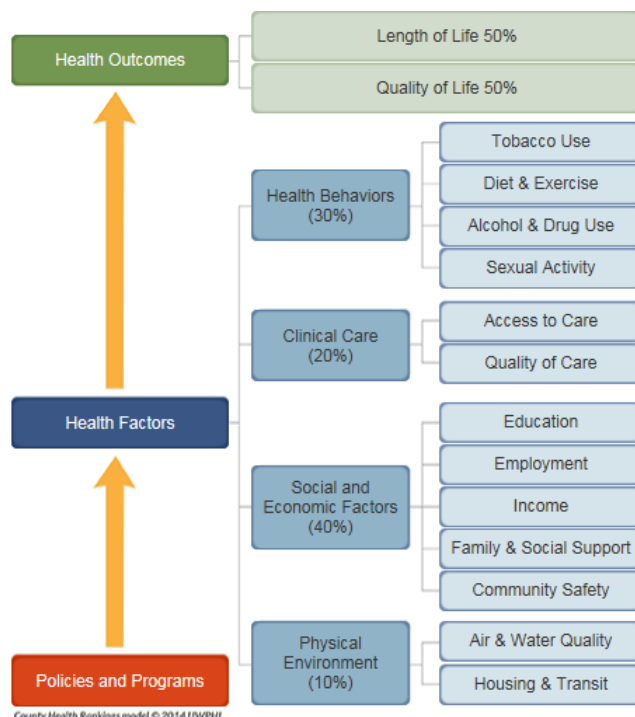


About the County Health Rankings & Roadmaps

About the County Health Rankings & Roadmaps

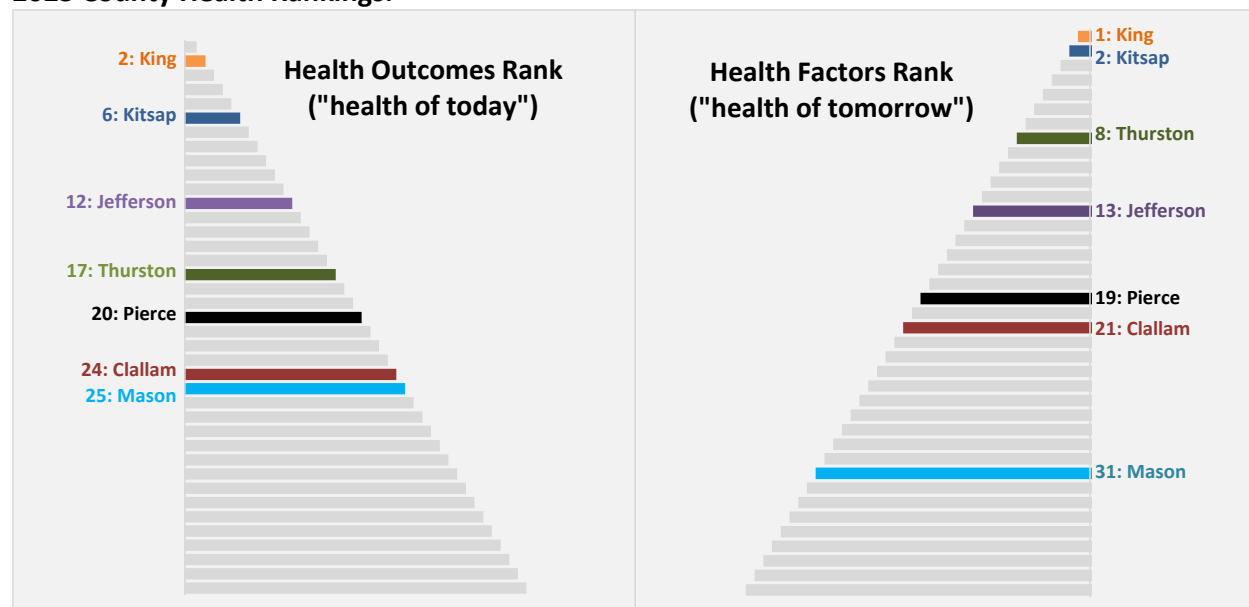
- <http://www.countyhealthrankings.org/>
- Developed by the Robert Wood Johnson Foundation and the University of Wisconsin Population Health Institute
- First released in 2010 for all U.S. counties, updates released annually but not comparable over time due to changes in definitions and sources
- Counties ranked within each state by indicators and section to allow comparison
- Data sources are national and must have data for *almost all* counties across the U.S.
- **Rankings & Roadmaps Contents:**
 - 34 indicators in 2 sections and 6 sub-sections:
 - Health Outcomes
 - Length of life and Quality of life
 - Health Factors
 - Health Behaviors, Clinical Care, Social and Economic Factors, Physical Environment
- **County Health Rankings are:**
 - Generated from national-level data sources
 - Ranks based on comparison to other counties in the state; statistical trend over time for some measures; comparison to WA State and top 10% of U.S. counties



County Health Rankings and Kitsap Public Health Indicators both:

- Raise awareness of community health
- Present a call to action
- Identify areas for more in-depth analysis

2023 County Health Rankings:



Comparison to 2022 Rankings:

- Kitsap County's **health outcomes** ranking **increased** from 9th (2022) to 6th (2023) in Washington state.
- Kitsap County's **health factors** ranking **increased** from 4th (2022) to 2th (2023) in Washington state.

2023 County Health Rankings Summary for Kitsap County

HEALTH OUTCOMES – KITSAP RANKS 6TH

	RANK	AREAS OF STRENGTH	IMPROVING TRENDS	AREAS TO EXPLORE	WORSENING TRENDS
Length of Life	13 th		<ul style="list-style-type: none"> Decrease in years of potential life lost 		
Quality of Life	5 th	<ul style="list-style-type: none"> Percentage of adults with fair or poor health Low birthweight 		<ul style="list-style-type: none"> Disparities for low birthweight by race/ethnicity 	

HEALTH FACTORS – KITSAP RANKS 2 ND					
	RANK	AREAS OF STRENGTH	IMPROVING TRENDS	AREAS TO EXPLORE	WORSENING TRENDS
Health Behaviors	5 th	<ul style="list-style-type: none"> • Low rate of physical inactivity • Access to locations for physical activity • Low rate of births to teenagers 	<ul style="list-style-type: none"> • Decrease in alcohol-impaired driving deaths 	<ul style="list-style-type: none"> • Adult smoking • Adult binge drinking • Adult obesity • Food environment index 	<ul style="list-style-type: none"> • Increase in number of sexually transmitted infections (chlamydia)
Clinical Care	4 th	<ul style="list-style-type: none"> • Low rate of uninsured • Low rate of preventable hospital stays 	<ul style="list-style-type: none"> • Decrease in ratio of population to dentists • Decrease in rate of preventable hospital stays • Increase in flu vaccinations for Medicare enrollees 	<ul style="list-style-type: none"> • Disparities for preventable hospital stays • Disparities in mammography screening 	<ul style="list-style-type: none"> • Unchanged ratio of population to primary care physicians • Decrease in percent of Medicare enrollees receiving mammography screening
Social and Economic Factors	4 th	<ul style="list-style-type: none"> • High percentage of adults completing high school • Low income inequality 		<ul style="list-style-type: none"> • Disparities in injury deaths • Disparities in children living in poverty 	<ul style="list-style-type: none"> • Unchanged trend for children living in poverty • Unchanged trend for unemployment
Physical Environment	9 th	<ul style="list-style-type: none"> • Low average daily density of air pollution (PM2.5) • Low percentage of households with severe housing problems • Low percentage commuting more than 30 minutes 	<ul style="list-style-type: none"> • Decrease in air pollution (PM2.5) 	<ul style="list-style-type: none"> • Drinking water violations 	

County Health Rankings website: <http://www.countyhealthrankings.org/>